

ALBERTA CHESS REPORT



May 1976

Alberta Chess Report (ACR) -- May 1976

Production: Len Steele

Thanks go to Murray Frank and Ian Loadman for gathering material for this 3rd issue of the ACR. The additional assistance of some other individuals in helping with the laborious task of mailing is appreciated.

Alberta Chess Association and Alberta Chess Report, mailing address:

Box 119, University of Alberta
Edmonton, Alberta T6G 2E0

Alberta Chess Association (ACA) Membership Fees:

Senior	\$3.00
Junior (under 18)	\$2.00
per calendar year	

If YOU do not now have a valid ACA membership, you may purchase one by writing directly to the ACA at the above address. You will be issued a receipt as proof of ACA membership. If you join the ACA through your local organizer or club, make sure you get and keep a signed receipt!

We still have no response to our plea for organizers who have not yet done so to send us updated ACA membership lists and submit fees for their area!! If you experience problems, the foul up may be at the local level.

Club executives are reminded that all of their members should join the Alberta Chess Association, and that fees along with addresses, etc, should be sent as promptly as possible to the ACA! Please make a concerted effort to ensure that everyone joins the ACA -- we can only thrive if we have a large membership base to work with!

Any Albertan who purchases a membership from the CFC (Chess Federation of Canada, Box 7339, Ottawa, Ont, K1L 8E4; current dues are senior \$7, junior \$5 per year, but they may increase in August) MUST also be a member of the ACA. You MUST have both CFC and ACA memberships to play in CFC rated Alberta tournaments!

If you have a CFC membership, but do not have an ACA membership, kindly secure the latter by writing to us and enclosing your ACA fee.

We are currently sending ACR's to most Alberta CFC members on the assumption they have joined the ACA. If you wish to remain on our mailing list, you must be a 1976 ACA member. We expect we will soon be able to verify our membership lists, and, if you haven't joined, do not expect further copies of the ACR.

1976 Alberta Deaf Chess Tournament Edmonton, May 1

Dave Mason, who was undefeated along the road to becoming the Champion, won a 2 game playoff match with Dale Hergott by a 1½-½ tally after they had each scored 5 - 1 in the 7 man round-robin. Dale Wood took 3rd by winning a tiebreaking playoff game with Danny Murdoch.

Thanks go to George Stohart and Dave Mason for submitting reports on this event. The Edmonton Chess Club was glad to provide sets and clocks.

	1	2	3	4	5	6	7	Pts
1. Dave Mason	X	T	½	T	½	T	T	5
2. Dale Hergott	0	X	1	1	1	1	1	5
3. Dale Wood	½	0	X	½	1	0	1	3
4. Danny Murdoch	0	0	½	X	½	1	1	3
5. Dennis Warick	½	0	0	½	X	½	1	2½
6. Lew Welsford	0	0	1	0	½	X	½	2
7. Dean Saunders	0	0	0	0	0	½	X	½

Report from the Red Deer Chess Club

Submitted by Neil Sharp, RR4, Lacombe, Alberta

The Red Deer Chess Club has been meeting each Wednesday at 7 pm in the Recreation Centre. The Club has closed for the summer, but will renew itself in September.

There are now 18 CFC and ACA members in the Red Deer Club, plus several regular visitors. The local newspaper has taken the rather enlightened position of including a weekly chess column in its pages. This column is locally produced and features news and games everywhere from Red Deer to Omsk. Interest in Red Deer is such that some members are even buying up 'Encyclopedias' and studying Russian.

Throughout the winter several rated tournaments were held. The results of two of these are given below.

RDCC Championship -- Division One
(incomplete double round-robin)

	W	L	D	Pct.
N. Sharp	8	0	3	.864
J. Kaastrup	6	3	2	.636
J. Kooiman	2	0	7	.611
P. Barron	3	5	2	.400
A. Grieb	4	7	1	.375
P. Provost	2	4	1	.357
B. Gaumond	1	7	0	.125

P. Barron -- N. Sharp

1. e4 e5, 2. Nf3 Nc6, 3. Bb5 a6, 4. Ba4 Nf6, 5. 0-0 Be7, 6. Re1 b5, 7. Bb3 d6, 8. h3 0-0, 9. c3 Na5, 10. Bc2 c5, 11. d4 Nd7, 12. d5 Nb6, 13. Nbd2 f5, 14. ef5 Bf5, 15. Bf5 Rf5, 16. Nf1 Qd7, 17. Ng3 Rf7, 18. b3 Qb7, 19. Bg5 Nd5, 20. Be7 Re7, 21. Nf5 Rd7, 22. Qd2 Nf4, 23. Kh2 Rad8, 24. Qe3 Nc6, 25. Rad1 Qc7, 26. Ng5 Ne7, 27. Ne7 Re7, 28. Qe4 Ng6, 29. Qd5+ Kh8, 30. Ne6 Re6, 31. Qe6 Nf4, 32. Qg4 c4, and Black's higher rating saved 16 rating points as White accepted Black's draw offer. (½-½)

Central Alberta Closed
(double round-robin)

	W	L	D	Pts
N. Sharp, Lacombe	6	0	0	6
A. Fierlbeck, Ponoka	2	3	1	2½
J. Kaastrup, Red Deer	2	3	1	2½
P. Provost, Red Deer	1	5	0	1

N. Sharp -- J. Kaastrup

1. e4 e5, 2. Nf3 Nc6, 3. Bb5 a6, 4. Bc6 dc6, 5. 0-0 Bg4, 6. h3 Bf3, 7. Qf3 c5, 8. d3 Nf6, 9. Be3 Be7, 10. Nd2 Nd7, 11. Nc4 0-0, 12. Qg3 b6, 13. f4 ef4, 14. Bf4 Ra7, 15. Rf3 Bh4, 16. Qg4 g6, 17. Bh6 b5, 18. Bf8 bc4, 19. Qf4 Qf6, 20. Qf6 Bf6, 21. Bc5 Bb2, 22. Ba7 Ba1, 23. d4, and Black resigned in a few moves. (1-0)

Edmonton CC Open, 1976S. Ball -- F. Borloi Round 9

1. d4 Nf6, 2. c4 g6, 3. Nc3 Bg7, 4. e4 d6, 5. f4 0-0, 6. Nf3 c5, 7. d5 a6, 8. Bd3 e6, 9. de fe, 10. 0-0 Nc6, 11. e5 de, 12. fe Ne5, 13. Ne5 Qd4+, 14. Kh1 Qe5, 15. Bf4 Qd4, 16. Qe2 Qd8, 17. Rad1 Bd7, 18. Rd6 Rf7, 19. Bc5 Qc7, 20. Bd4 Re8, 21. Be5 Qc8, 22. Rf2 Bc6, 23. Rdf1 Qd8, 24. Be4 Ref8, 25. Bc6 bc, 26. g4 Qe8, 27. h3 c5, 28. Kg1 Qc6, 29. Qf3 Ne4, 30. Qe4 Qe4, 31. Ne4 Rf2, 32. Rf2 Rf2, 33. Kf2 Be5, 34. Kf3 Bd4, 35. b3 h6, 36. Ke2 Kf7, 37. Kd3 Bg1, 38. a3 Ke7, 39. b4 cb, 40. ab Bb6, 41. c5 Bc7, 42. Kc4 Be5, 43. c6 Bh2, 44. b5 ab+, 45. Kb5 Bc7, 46. Ka6 h5, 47. Kb7 Kd8, 48. g5 e5, 49. h4 Ba5, 50. Nc5 Ke7, 51. c7 Bc7, 52. Kc7 Black resigns.

A report on the 1976 ECCO was in the last ACR. Stephen Ball was winner of that event.

1976 Calgary Closed February - April

Championship Division

Branimir Brebrich became the 1976 Champion by virtue of placing clear first despite a last round forfeit to Brian McLaren. J. MacIntosh took second on tiebreak over McLaren. These top three players far outdistanced the remainder of the pack.

Table with columns: Player Name, Rating, and a 9-column record of wins/losses/draws, plus Pts. Includes players like B. Brebrich, J. MacIntosh, B. McLaren, A. Milne, B. Szucs, J. Kassay-Farkas, R. Pedersen, J. Kralović, and R. Short.

(average 1876)

Bill Bentley tells us that the top finishers in other sections were:

Division 'A' (rating from 1577 to 1695)

- 1. B. Fegyverneki 5 1/2 out of 7
2. P. Allan 5
3. D. Wyllie 4

Division 'B' (1391 to 1551)

- 1. R. Chipperfield 6 out of 7
2. W. Cameron 5
3. B. Starkes 3 1/2

Division 'C' (950 to 1339)

- 1. S. Belzberg 4 1/2 out of 7
2. N. Falls 4
3. T. Patten 4

Division 'D' (unrated & provisional rating)

- 1. T. Schultz 6 out of 7
2. M. Robertson 5 1/2
3. T. Lonergan 5

Some games from the Championship Section:

A. Milne -- R. Short

1. d4 Nf6, 2. c4 c5, 3. d5 e6, 4. Nc3 ed, 5. cd d6, 6. e4 g6, 7. Nf3 Bg7, 8. Bg5 h6, 9. Bh4 g5, 10. Bg3 Nh5, 11. Bb5+ Bd7, 12. Bd7+ Qd7, 13. Ne5 Be5, 14. Be5 de5, 15. Qh5 Kf8, 16. h4 f6, 17. hg fg, 18. a4 Qf7, 19. Nb5 Qh5, 20. Rh5 Nd7, 21. f3 Nf6, 22. Rh1 Ne8, 23. Kd2 a6, 24. Na3 Nd6, 25. a5 b5, 26. ab (e.p.) Rb8, 27. Rhc1 Rb6, 28. Rc5 Rb2+, 29. Nc2 Rb6, 30. Rc6 Rc6, 31. dc6 a5, 32. Ne3 Rh7, 33. Ra5 Rc7, 34. Rc5 Nf7, 35. Nd5 Rc8, 36. c7 Nd6, 37. Nb6 Re8, 38. c8=Q Nc8, 39. Rc8 Rc8, 40. Nc8 h5, 41. Nb6 Ke7, 42. Kc3 g4, 43. fg Black resigns.

B. McLaren -- J. Kassay-Farkas

1. b3 Nf6, 2. Bb2 Nc6, 3. f4 d5, 4. e3 Bg4, 5. Nf3 a6, 6. h3 Bf5, 7. d3 h6, 8. Nbd2 e6, 9. a3 Be7, 10. g4 Bg6, 11. Bg2 0-0, 12. Qe2 Nd7, 13. 0-0 Bf6, 14. c3 Nc5, 15. Ne1 Bh4, 16. b4 Na4, 17. Ndf3 Bf6, 18. Qc2 b5, 19. Rd1 Qe8, 20. Nd4 Rd8, 21. Nef3 Nd4, 22. cd Rd6, 23. Ba1 Rc6, 24. Qb3 Qd8, 25. Rdcl Rcl, 26. Rcl Nb6, 27. Ne5 Be5, 28. de5 Qh4, 29. Bd4 Na4, 30. Qd1 h5, 31. g5 Rc8, 32. Qf1 Qg3, 33. Rd1 Bf5, 34. Qf2 Qf2+, 35. Kf2 Kf8, 36. Ke2 Ke8, 37. Rcl Kd7, 38. Kd2 Bh7, 39. Ke2 Ra8, 40. e4 c6, 41. f5 Rc8, 42. g6 Bg8, 43. gf Bf7, 44. fe+ Be6, 45. ed cd, 46. Rc8 Kc8, 47. h4 Kc7, 48. Ke3 Kc6, 49. Kf4 g6, 50. Kg5 Bf5, 51. Kf6 Bd3, 52. Bh3 Nb6, 53. Bb6 Kb6, 54. e6 Bf5, 55. Bf5 gf, 56. e7 d4, 57. e8=Q Black resigns.

R. Pedersen -- A. Milne

1. e4 e5, 2. Nc3 Nf6, 3. g3 d5, 4. ed Nd5, 5. Bg2 Be6, 6. Nge2 Nc6, 7. d4 Nc3, 8. bc3 Bd5, 9. 0-0 Bg2, 10. Kg2 Qd5+, 11. f3 Bd6, 12. Qd3 Na5, 13. Qe4 Qe4, 14. fe4 f6, 15. Rb1 0-0-0, 16. g4 Rhe8, 17. d5 Rf8, 18. g5 Be7, 19. h4 c6, 20. Ng3 g6, 21. gf Rf6, 22. Bg5 Rf1, 23. Nf1 Bg4, 24. hg4 h6, 25. gh Rh8, 26. Ne3 Rh6, 27. Rh1 Rh1, 28. Kh1 Kd7, 29. Kg2 b5, 30. Kf3 Kd6, 31. Kg4 cd, 32. Nd5 Nc4, 33. Kg5 Nd2, 34. Nf6 Nbl, 35. Nd5 Nd2, 36. Nf6 Nbl, 37. Nd5 Nd2 Draw.

(RR)2 Edmonton April - May, 1976

Four of us got together for a rated double round-robin. Gordon Campbell cleaned up with 5 - 1, while Chris Evans was a 'distant' second with 3 1/2 - 2 1/2. Yours truly, Len Steele, and Eric Long reluctantly handed over their respective \$25 entry fees.

Though Gordon Campbell's big lead might be considered a surprise by some, the most amazing display of his talent occurred not over the board, but when we went for beer and pizza after one of the rounds. Campbell had knocked back a few bottles, and we decided to 'sucker' him into our regular Monday night quarter tossing extravaganza (namely, whoever is closest to a door set back in an entranceway wins all the loot). So, we fired away, with some throws good enough that we knew Gordon was beaten. However, like a true champion he did not say die! There he stood, proud and undaunted, determination written on his face, concentration oozing from every pore -- he let his quarter fly -- BONK! -- the damn thing rebounded off Rae Thom's chest (he was standing to one side), and whizzed into the doorway, ending up barely the width of a flea's hair from the door! I mean, like really, is that skill, or is that skill?

Now that the 'folksy' bit is over, here is the crosstable:

Crosstable table with columns: Player Name, 1, 2, 3, 4, Points. Includes G. Campbell, C. Evans, L. Steele, and E. Long.

and a game:

G. Campbell -- E. Long

1. e4 c5, 2. d4 cd, 3. Nf3 Nf6, 4. e5 Nd5, 5. c4 Nb6?!, 6. Qd4 Nc6, 7. Qe4 d5, 8. ed(e.p.) Qd6, 9. Nc3 Qe6?, 10. Bd3 Qe4, 11. Be4 e6, 12. 0-0 a6, 13. b3 Nd7?!, 14. Be3 Nc5, 15. Bc6+ bc6, 16. Rad1 a5, 17. Ne5 Bb7, 18. Bc5 Bc5, 19. Ne4 Be7, 20. Rd7 Bc8, 21. Rc7 f5, 22. Nc6 Bd7, 23. Ne7 fe4, 24. Rd1 Rd8, 25. Nc6 Bc6, 26. Rd8+ Kd8, 27. Rc6 Black resigned.

1975 Vancouver Labor Day Open

G. Taylor -- T. Stochinsky

Taylor is rated about 2100. Stochinsky is a home town (Edmonton) boy who is rated quite a bit below 2100. Nevertheless, he manages to 'roll' this B.C. expert.

1. d4 g6, 2. c4 Bg7, 3. g3 Nf6, 4. Bg2 0-0, 5. Nc3 d6, 6. Nf3 Nbd7, 7. 0-0 e5, 8. h3 c6, 9. d5 c5, 10. Bg5 h6, 11. Be3 Nh5, 12. Qd2 g5, 13. h4 f5, 14. hg f4, 15. Bf4 ef4, 16. g4 hg, 17. gh5 g4, 18. Nh2 Qh4, 19. Be4 Be5, 20. Rfd1 f3, 21. Nf1 Bf4, 22. e3 Qh3, 23. Resigns.

(Never could the annotations supplied with this game be published, never.)

Two Draws from Down Under -- by Chris Evans

Readers may be interested in two draws, but not, in my opinion, dull games I played in New Zealand in 1975. Both are against teenagers -- incidentally, I lost 3 games to teenagers, and had a lost position against a 12 year old, who allowed a swindle through inexperience.

Auckland Open Round 7

R. Wansink -- C. Evans

1. e4 c5, 2. Nf3 Nc6, 3. Nc3 d6, 4. d3 g6, 5. g3 Bg7, 6. Bg2 Rb8,

Wansink is about 17 years old, of Dutch parentage. He was known as 'Super-Kid' several years ago, but after winning the North Island Championship at 15, he's no longer a kid. This early Queenside expansion I play is recommended, but I would prefer more circumspect play now (if I ever play the Sicilian again, which is unlikely!)

7. 0-0 b5, 8. Nh4 b4, 9. Nd5 e6, 10. Ne3 Nh6, Here, since the other Knight is loose and needed on e7.

11. f4 Ne7, 12. g4 f5, Black had arrived 30 minutes late, and had now used an hour (time control was 40/2). White must not be allowed to play f5.

13. ef ef, 14. g5 Nf7, 15. Nf3 Bb7, 16. Nd2 d5, Much to the surprise of both Wansink and myself, Black has achieved an excellent position. In fact, Bob was so concerned he had used 1.40 hrs, and I, 1.19. The rest of the game was therefore not accurately played, but we don't quit.

17. Qe2 0-0, 18. Nd1 Re8, 19. Nf3 Qd6, I knew this was an awful move, but couldn't think what else to do. The Knights should go to more active positions, and Qd6 prevents one of them from doing so.

20. Qf2 a5, 21. Kh1 Ba0, 22. Re1 a4, 23. a3 b3, 24. cb Rb3, 25. d4

Forced, as Wansink pointed out, but very good, as I regretfully confessed. Black has no good way to protect the c-pawn, and to play c4 seemed to leave the Qside full of holes. White could play Bb4. After using most of the remaining time I decided to keep attacking -- usually good policy in a time scramble.

25. ... Rf3, 26. Bf3 cd, 27. Bd2 Qd7, 28. Bb4 Bd3,

29. Re7 Re7, 30. Be7 Qe7, 31. Bd5 Be4+, Naturally I'd hoped to play this before the d5 pawn disappeared, but ...

32. Be4 fe, Black has good compensation for the exchange -- safer King, two good pawns, an excellent Bishop, and a few more minutes.

33. Rcl h5, 34. Qe2 Nd6, 35. Nf2 Qb7, 36. Kgl d3,

37. Nd3! ed3, 38. Qe6+ Nf7, 39. Qc8+

If 39. Rc8+ Kh7, 40. Rc6, then 40. ... d2!

39. ... Qc8, 40. Rc8+ Kh7, 41. Kf2 Bd4+, 42. Ke1 Bb2,

43. Kd2 Ba3, 44. Rc4!

Assuring the complete elimination of the Qside pawns, so -- agreed drawn.

Match Game

K. Jensen -- C. Evans

Kai Jensen is USA born; his father is a History Professor. He's a good attacking player.

1. e4 e5, 2. Nc3 Nc6, 3. f4 ef, 4. d4

At this point I suspected that this was Jensen's favorite opening, and that I was in for a hard time. Nevertheless, I decided to go in for the main line as far as I could remember it. During the coffee break after two hours play (a civilized

custom) I confirmed that Jensen had indeed had many enjoyable experiences with this line.

4. ... Qh4+, 5. Ke2 d6, Better is 5. ... d5.

6. Nf3 Bg4, 7. Bf4

I had overlooked this possibility, and began to feel very unhappy. Black has no material to compensate for his prospectless position, and White's King is frustratingly safe.

7. ... Nf6,

ECO C25/6 claims that Black is better after 7. ... f5. They could be correct.

8. Ke3 Bf3, 9. Kf3 Qh5+, 10. Ke3 Qd1, 11. Rd1 Nh5, Better to play Be7 first.

12. Bg5 f6,

I had intended 12. ... Be7; but then saw that White is much better after 13. Be7 Ne7, 14. e5 or 14. Be2 Nf6, 15. e5.

13. Bh4 g6!,

Black had used 1.25 hrs, White 0.10! The position is difficult, as Black must save his N on h5, threatened by g4, and White has threats of Nd5 or Bb5 followed by d5.

14. Nd5 Bh6+, 15. Kd3 0-0, 16. Nc7 Rac8, 17. Nd5 Nb4+, 18. Nb4 Nf4+, 19. Ke3 Ng2+, 20. Kf3 Nh4+, 21. Kg4 Bg5, 22. c3 Kg7, 23. Bd3 Rce8, 24. Rdel h5+, 25. Kg3 f5, 26. e5 de, 27. de f4+, 28. Kf2 f3, 29. e6 Draw.

Opening Analysis -- Alekhine's Defence

by Murray Frank

Marjanović -- Knežević Yugoslavia 1975

1. e4 Nf6, 2. e5 Nd5, 3. d4

Not very dangerous for Black is 3. c4 Nb6, 4. c5 Nd5, and now:

5. Nc3 e6, 6. Nd5 ed5, 7. d4 d6, 8. cd cd, 9. Nf3 Nc6, 10. Be2 Be7, with equality.

or

5. Bc4 c6, 6. Nc3 d6, 7. cd ed, 8. Qb3 de, 9. Nd5 cd5, 10. Bd5 Qc7 with a fine position for Black.

3. ... d6, 4. c4

The other popular move here is 4. Nf3, with continuations of:

I: 4. ... g6, 5. Ng5 c6! (best), 6. Bc4 (or 6. c4 Nc7, 7. Qf3 f6, 8. ef ef, equal, or 6. Qe2?! h6 when Black already stands better) Bg7, 7. Qe2 0-0, 8. 0-0 de, 9. de h6, 10. Nf3 Bg4, 11. Nbd2 Qc7, 12. h3 Bf3, 13. Nf3 e6, with a solid position for Black.

II: 4. ... g6, 5. Bc4 Nb6 (if 5. ... c6, 6. Bd5 cd5, 7. Bf4, White is a bit better), 6. Bb3 Bg7, 7. Ng5 d5, 8. f4 f6, 9. Nf3 Nc6, 10. Be3 Bg4, 11. Nbd2 Qd7, 12. 0-0 0-0-0 with an unclear position.

III: 4. ... g6, 5. c4 Nb6, 6. ed cd, 7. Be2 Bg7, 8. 0-0 0-0, 9. Be3! Nc6, 10. Nc3 Bg4, 11. b3 e6, 12. Qd2 d5, 13. c5 Nd7, 14. Rac1 Bf3, 15. Bf3 f5, with a minimal advantage for White.

IV: 4. ... Bg4, 5. Be2 e6, 6. 0-0 Be7, 7. c4 Nb6, 8. Nc3 0-0, 9. Be3 d5, 10. c5 Bf3, 11. gf! Nc8, 12. b4 Nc6, 13. b5 Na5, 14. Qa4 b6, 15. c6 Bh4, 16. Qc2 Kh8, 17. Kh1 Ne7, 18. Bd3 g6, 19. Ne2 White's forces are better coordinated.

4. ... Nb6, 5. f4

This, the 4 Pawns Attack, is White's most ambitious and aggressive variation. It is the most direct attempt at a refutation of Alekhine's Defence, and is, therefore, critical. White has a large center which Black must try to undermine. If Black can successfully do so, he will probably win, if not, then White will probably crush Black.

5. ... de,

This move can be delayed by 5. ... Bf5 or even 5. ... g6.

6. fe Bf5, 7. Nc3 e6, 8. Nf3 Nc6, 9. Be3

This is the standard position of the 4 Pawns Attack. From here Black has several choices:

I: 9. ... Be7, 10. d5 ed (or. 10. ... Nb4, 11. Rc1! ed, 12. a3 c5, 13. ab d4, 14. Bd4 cd, 15. Qd4 Bb4, 16. c5 Nd5, 17. Bb5+ Bd7, 18. Bd7+ Qd7, 19. 0-0 which is ≠ according to Hort), 11. cd Nb4, 12. Nd4 Bd7, 13. e6 fe, 14. de Bc6, 15. Qg4 Bh4+, 16. g3 Bh1, 17. 0-0-0 Qf6, 18. gh4, with an obscure position that is better for White, i.e., 18. ... 0-0, 19. Be2! Bc6, 20. Bg5 Qf2, 21. Bh6 Qf6, 22. Nf5. The move 9. ... Be7 currently seems suspect.

II: 9. ... Qd7, 10. Be2 0-0-0 (possible is 10. ... Bg4), 11. 0-0 f6, 12. d5 Ne5, 13. Ne5 fe5, 14. a4 with advantage to White. Every source seems to give a different 'refutation' to 9. ... Qd7. This is the one that seems the most convincing, but who really knows?

III: 9. ... Bg4, 10. Be2 Bf3, 11. gf3 Qh4+, 12. Bf2 Qf4, 13. c5 Nd5, 14. Nd5 ed5, 15. Qd2. White has an advantage.

IV: 9. ... Bb4, 10. Be2 0-0 (another possibility is 10. ... Na5!?), 11. 0-0 Bc3, 12. bc3 Na5, 13. Nd2 Qd7, 14. Rf4 Bg6, 15. Qf1 c5, 16. h4!±. This line seems playable for Black, though it may not be as good as the following move.

9. ... Nb4, 10. Rc1 c5, 11. Bg5

A better way for White to try for an advantage is 11. Be2 Be7, 12. 0-0, or. 11. ... Bg4!? 12. Bg5

11. ... f6, 12. ef gf, 13. Be3

This move was suggested by Eales & Williams in their book on Alekhine's Defence. The older 13. Bh4 Be7, 14. dc5 Qd1+, 15. Rd1 Nd7 gives equality according to Pachman, but even better after 13. Bh4 is Bh6!, with a clear advantage to Black.

13. ... Bg4,

If 13. ... cd?, 14. Nd4 and White has the better game.

14. d5

14. Ne4 Bf5, 15. Ng3 Bg4 gives White equality.

Also possible are 14. Be2 or 14. a3.

14 ... ed, 15. cd N4d5, 16. Bb5+ Bd7, 17. Ne5! Ne3!,

18. Bd7+?

White slips. According to Marjanović, the balance is maintained by 18. Qh5+ Ke7, 19. Nd7 Nd7, 20. Qe2, a conclusion that seems strange, but is hard to refute.

18. ... Nd7, 19. Qh5+ Ke7, 20. Qf7+ Kd6, 21. Nd7

If 21. Nb5+ Ke5, 22. Rc3 Bh6, 23. Qh5+ f5, 24. Qh6 Qh4+, 25. Qh4 Ng2+ and Black wins (analysis by Marjanović). It must have been quite frustrating for White to watch the Black King sitting in the middle of the board in an open position, with complete immunity!

21. ... Qd7, 22. Qf6+ Kc7!, 23. Ne2

Or 23. Qh8 Re8 with the idea of 24. ... Bg7.

23. ... Qf5!

If 24. Qh8 Ng2+, 25. Kd1 Qd3 mate. So White resigned.

Loadman -- Ball ECCO 1976 Round 8

1. e4 c6, 2. d4 d5, 3. Nc3 de, 4. Ne4 Nf6, 5. Nf6+ gf, 6. c3 Bf5, 7. Ne2 h5, 8. Ng3 Bg6, 9. Bc4 Qc7, 10. Qe2 Nd7, 11. Bb3 0-0-0, 12. Be3 h4, 13. Nf1 e5, 14. 0-0-0 e4, 15. Qd2 Ne5, 16. Bf4 Nd3+, 17. Qd3 Qf4+, 18. Qd2 Qc7, 19. Ne3 f5, 20. g3 Bh6, 21. d5 f4, 22. Ng4 e3, 23. Qd4 e2, 24. Rdel Bg5, 25. gf c5, 26. Qa4 Qf4+, 27. Qf4 Bf4+, 28. Ne3 Be4

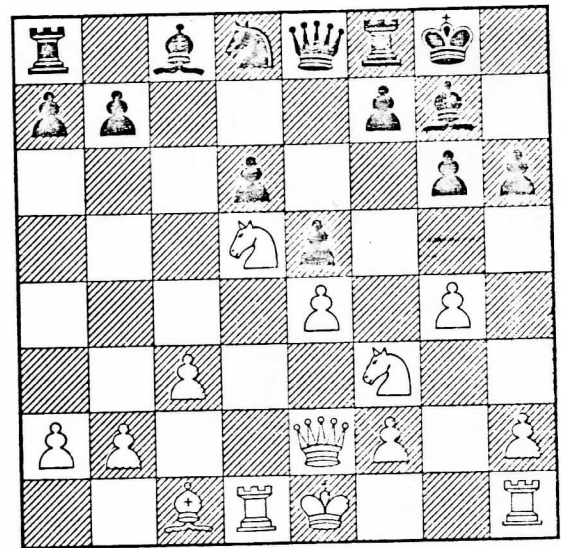
And Black won in six more moves.

1975 Canadian Closed Championship Calgary

W. Doubleday -- L. Piasetski Round 1
(notes by L. Piasetski)

- d4 g6, 2. e4 d6, 3. Nf3 Bg7, 4. Bc4 Nf6, 5. Qe2 0-0, White's system sets up the threat e5 and e6, but in reality causes Black few problems. White should now play 6. e5 which may be answered by either 6. ... Ne8, 7. e6? d5, or 6. ... de, 7. de Nd5.
- Nbd2 Nc6, 7. c3 Nfd7, 8. Nf1 e5, 9. Bg5 Qe8, 10. Rd1?! 10. Ne3 deserves attention. After 10. ... Nb6, 11. Nd5 Nd5, 12. ed5, the piece sacrifice ... ed4 looks dubious, but both 12. ... Nd8 and 12. ... Nb8 are playable.
- ... Nb6, 11. d5 Nd8, 12. Bb5 Nd7, 13. g4 White's Bishops look imposing, but their position cannot be maintained. The text move is over-ambitious, yet it is hard to suggest a viable alternative.
- ... h6, 14. Bc1 14. Bh4!? is an interesting alternative.
- ... c6!, 15. Bc4 Nb6, 16. Ne3 cd5, 17. Bd5 Nd5, 18. Nd5

Playing for material gain, White hopes that Black will misplay his attack. Instead 18. Rd5 Qc6 followed by Be6 is good for Black.



- ... Bg4!, 19. Nc7 Qc6, 20. Na8 f5!, 21. Rg1 Bh5, 22. Qd3! Nf7!, 23. Nh4 fe4, 24. Qg3? The best chance was 24. Qd5 Bd1, 25. Ng6! Qd5, 26. Ne7+ Kh7, 27. Nd5 and Black has technical difficulties realizing his extra pawn.
- ... Qc4, 25. f3 25. Rd2 is answered by 25. ... e3, 26. fe3 Ng5, 27. Rf2 Ra8.
- ... ef3, 26. Qf2 Ng5!, 27. Bg5 hg5, 28. Rg5 Qe4+, 29. Kd2 If 29. Kf1, Qe2+.
- ... Bh6, 30. Rdg1 Bg5+, 31. Rg5 Qf4+, 32. Qe3? Qe3+, 33. Ke3 f2, 34. Ng6 Bg6, 35. Rg6+ Kh7 and White resigns.

We would like to thank IM L. Piasetski for annotating this game, and Frank Kluytmans for making it available to us.

Remember, in future issues of the ACR we will include other games from the 1975 Canadian Closed!

The June issue of the ACR will primarily cover the recent Alberta Closed Championship held the Victoria Day long weekend in Calgary.