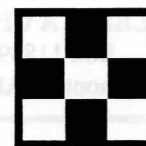


ALBERTA CHESS REPORT



A Newsletter Published by the Alberta Chess Association
December 1990 Vol. 15 No. 4

1990 Alberta Open

by Craig Vokey (TD)

(Held at the U of A in Edmonton October 6-8 on the Thanksgiving weekend, this event was hosted by the U of A Chess Club and sponsored by the ACA.)

If there is such a thing as the "Battle of Alberta", where chess is concerned, then this one belongs to Calgary as the top four finishers were from our neighbor to the south. Greg Huber was the class of the tournament, posting a perfect 6-0 score, finishing a full 1.5 points ahead of his closest challengers. Except for some difficulties in the opening against Rob South, Greg rolled over all other opposition. Omar Farid, Roy Yearwood and Rob South tied for 2nd-4th. (A list of prize winners is on page 4.)

The ACA elections were held on Sunday before the 3rd round, and Ford Wong asked me to announce that as President he would now like everyone to address him as "Mr. Big". I would like to thank Louis Wang, Eric Holleman and Rob Gardner for helping me with the tournament, and thank all players who showed great patience with putting up with some minor problems in rounds 3 and 5.

1	Greg Huber	2253	+19	+14	+13	+2	+3	+6	6.0
2	Roy Yearwood	2124	+16	+9	+18	-1	+8	=4	4.5
3	Rob South	2356	+33	+8	=5	+17	-1	+15	4.5
4	Omar Farid	2064	bye	=7	+19	+11	+14	=2	4.5
5	Réjean Plante	2065	+22	+26	=3	+15	-6	=9	4.0
6	Rob Gardner	2211	+25	=10	=17	+20	+5	-1	4.0
7	Louis Wang	1629	+24	=4	-8	+36	=10	+30	4.0
8	Ford Wong	1920	+41	-3	+7	+21	-2	+20	4.0
9	Geoff Newton	1794	+32	-2	+23	+13	=18	=5	4.0
10	Alex Kuti	1853	+35	=6	-20	+16	=7	+21	4.0
11	Jerome Sheahan	1771	+34	-13	+22	-4	+23	+18	4.0
12	Eric Schocat	1807	=39	+36	-15	=31	+19	+17	4.0

3.5: 13 Andrew Paduch; 14 Samuel Sia; 15 Gerry Aspler;
16 Adam Wu

3.0: 17 Bill Bentley; 18 John Baser; 19 Branko Palcic;
20 Pal Kalher; 21 Robert McCullough; 22 Bruce Kiely;
23 Francis Northover; 24 David Bullas; 25 Eric Holleman

2.5: 26 William Rusk; 27 Juan Pavez; 28 John Macnab;
29 Jeff Rouse; 30 Rod Thiel (/5)

2.0: 31 Paul Montambault; 32 Mike Pennings;
33 George Heagle; 34 Sherwin Chan

1.5: 35 Gary Swayda; 36 Blair Lowe (/5);
37 Crystal McHughen; 38 Amir Javidan

1.0: 39 Danny Kiely; 40 Amirali Javidan

0.0: 41 Branko Georgijevic (/3); 42 Mike Beaulieu (/1)

(continued on page 4)

ACA Programs, Leadership and Planning

by Ford Wong, ACA President

The Alberta Open, the Northern Alberta Open, the Southern Alberta Open and the Trumpeter Classic are just a few of the many chess tournaments which the ACA sponsors during the course of a year. However, the ACA does more than just sponsor tournaments and publish a newsletter. In this issue of the ACR, it is my intention to bring to your attention some of the many programs which the ACA has to offer and where the funding for them comes from.

(continued on page 3)

1990 Southern Alberta Open

by John Schleinich (TD)

The SAO was held in the Cambrian Heights Community Hall in Calgary on November 17-18. This annual event is usually well attended since practically all the entrance fees go toward prizes. The ACA sponsors the SAO and picks up all expenses except for the rating fee. Another reason why this event is popular might be the fact that it is the last big tournament before Christmas and is announced well in advance so everybody can plan for it (unfortunately, the SAO suffered from lack of wide publicity as to the exact date - LS). The weather usually cooperates, giving our out-of-town participants clear roads and good driving conditions.

(continued on page 6)

In this Issue

Alberta Open (Craig Vokey)	1
ACA Programs... (Ford Wong)	1
Southern Alberta Open (John Schleinich)	1
ACA Membership Fees, Address, etc.	2
Editorial Comments	2
ACA Board of Directors	2
Important Info — Alberta Closed	3
More Tournament Reports	7
JUNIOR CHESS SECTION	8
Junior Chess Clubs	8
Northern Alberta Junior Playoff (Rob Gardner)	8
World Under 16 Championship	8
Reports on Other Junior Events	8
Club Listings	9
Tournament Announcements	(back page)

Please send your submissions to

ALBERTA CHESS REPORT
Box 11839 Main P.O.
Edmonton, Alberta T5J 3K9

The *Alberta Chess Report* (ACR) is published by the *Alberta Chess Association* (ACA).

All articles which are not credited were written by one of the Editors. Opinions expressed in the ACR do not necessarily represent those of the ACA.

Editors: Rob South & Len Steele

Membership Fees

Senior	\$5 per year
Junior	\$3 per year
Participating	\$1 per year

"Junior" and "Participating" memberships are open only to those 17 years of age or less (submit birthdate). Participating members do not receive an ACR.

ACA Life Memberships can be obtained (rates on request).

Chess Federation of Canada (CFC) memberships are available and include ACA. One-year rates for CFC/ACA membership are: senior...\$30; junior...\$18; participating...\$8.

When submitting memberships, include player's full name, address and CFC number (if a previous CFC member). Birthdate is required for junior and participating members. (Phone number is optional, but appreciated.)

Please specify if a member is female. For school-age members, please include the school attended and grade, if possible.

Send membership fees to the ACA mailing address:

Alberta Chess Association
Box 11839 Main P.O.
Edmonton, Alberta T5J 3K9

Editorial Thoughts on Editing by Len Steele

There are two Editors this time, with Robert South ("RS") doing the initial work, providing all of the game scores and a fair amount of text in an MS DOS file, and Len Steele ("LS") adding more text, converting Rob's file for use on a Mac, creating diagrams (positions were selected by Rob, but unfortunately translating DOS diagrams to the Mac didn't work), and "proofing" the text. Unattributed editorial comments are likely made by Rob.

As "chief" Editor of the ACR, at least for the next several issues, I (LS) have a few comments on "editorial policy":

The ACA gives the Editor the right to choose what goes into the ACR, without prior approval from the President or the Board, given that standard features (fees, ACA address, clubs, etc.) must be included. The ACA has the right to "hire and fire" the Editor (not that the position is well paid!).

Reports submitted to the ACR may be edited based on space requirements and/or to "improve" wording (avoiding significant change in the author's apparent meaning!).

Letters to the editor and articles ("fact or fiction") will be published (or not) at the editor's discretion, though opinions of the ACA President and members of the ACA Board, when advanced, on publishing an article will be given strong consideration. Passages considered by the editor to be of an inflammatory nature or insulting to identified persons will not be published as is, but may be summarized (a serious complaint about a chess matter or some individual should be submitted in writing to the ACA President, who will decide what action, if any, to take).

The editor should not be expected to chase down reports for all events, or to continually verify club listings, etc. It is up to organizers (and players!?) to help ensure that the vast majority of Alberta chess events receive coverage in the *Alberta Chess Report*.

Input from readers as to ACR content is invited. (I believe the ACR's mandate is coverage of *Alberta* events and of happenings that involve *Alberta* players. Some may feel we should have a fair amount of general national and international coverage. I would argue that we can have plenty to report on and write about in *Alberta*...)

What do you think? More annotated games? "Teaching" articles? Personal experiences? ...?

Reporters? What reporters?

It is desirable to have at least one ACR "Reporter" or "Correspondent" in each "chess area" of Alberta. I (LS) may contact individuals and ask them to accept such a post, but invite readers to volunteer on their own. Correspondents will be listed as such in the ACR each issue. What would they be asked to do? Basically, to see that the ACR gets as much news as possible from their areas (club news, weekend tournaments, school chess, general interest items) - this does not mean that the correspondent has to write everything up, but that he or she takes the initiative to urge someone to submit information, perhaps simply by reminding a TD or organizer. The reporter could act as a focal point in an area, gathering up several reports and submitting them. Anyone interested?

It does not compute...

That little lead in is to ask those who have DOS or Mac micros to submit reports and articles in a TEXT (ASCII) file whenever possible and time permits. HD disks should be avoided (though I can access them if necessary).

ACA Board of Directors

President: Ford Wong
Vice-President: Mike Sekuloff
Treasurer: Mike Barkwell
Secretary: Roy Yearwood
Past-President: Fred McFaul
Directors: Bill Bentley, Arniel Frialde, Rob Gardner, Phil Lefkowitz, Tim McMurphy, Steven Peter, Jim Van Wyck, Brad Willis.

ACA Planning (cont. from p. 1)

The ACA also assists participants to attend National championships, assists Albertans formally invited to International Chess events, helps chess clubs starting up, supports existing chess clubs and junior chess organizations, assists in tournament participation, assists in training for juniors and nonjuniors, hosts seminars to teach chess skills, provides equipment as needed, and hosts simultaneous events.

For the past two years, the ACA has had a Junior Chess Outreach program, a program to provide additional support designed to reach and assist schools, teachers and junior organizations (especially those which are not in or near the larger urban areas). This program is also used to assist with club organization and basic equipment level through controlled equipment grants and providing equipment at cost as well as providing information on teaching materials and chess book availability.

In addition, the ACA is involved in leadership development programs. Leadership development is training which enhances the skill level of individuals in a leadership capacity, e.g. tournament director workshops, taking courses on planning, providing instructional materials for the teaching of chess in schools or how to organize a chess club, etc. This type of training is to develop the infrastructure of the ACA itself, i.e. to develop quality people to

assist in running the organization and organizing and running tournaments. If you are interested in taking this training, please contact an ACA Board member.

The ACA is also the liaison with the Chess Federation of Canada and is recognized as the body responsible for chess throughout Alberta.

Where does the ACA get the money for running these programs? Besides revenue generated by hosting tournaments and membership fees, the ACA relies heavily on a government base level grant from Alberta Recreation and Parks (ARP). The ACA remains qualified for this grant only by meeting several criteria during the course of a year, e.g. at least 15% of the grant received must be spent in each of "programs" and "leadership" areas, and must be spent in at least three regions of the province. For this grant the ACA must submit its Profile and Application to the granting agency each year by March 1st. Without this government grant, many of the projects which the ACA currently sponsors would not be available.

One program which the ACA has not done enough of in the past is fundraising. Next year, we will actively pursue methods of generating more revenue, especially since the government is cutting back on grants. Otherwise, the ACA will also have to cut back some of its programs which I think are beneficial to our membership and for promotion of chess.

Besides the base level support grant provided by ARP, the ACA has been the beneficiary of RPW grants, which are additional grants applied for separately each year and used for enrichment purposes, i.e. to promote expansion or programs. The more innovative the idea and the higher priority it is given by the ACA itself, the more chance the government will approve it. This is where the majority of the funding for Junior Chess Outreach comes from.

This has been a brief outline of the many programs which the ACA supports. At the annual planning meeting in January, the Board of Directors determines what programs will be supported for the upcoming year. New ones are added, and existing ones discontinued or modified. The schedule of ACA sponsored events is also determined at this meeting. Normally, the list of programs changes very little from year to year, retaining a core which has proven to be of continuing value. In fact, the ACA has a plan which highlights all programs for the next several years. This is both in our own self-interest and to comply with requirements for maintaining grant eligibility.

We welcome members with any new or innovative ideas for the promotion of chess. Please forward your ideas to any member of the Board and/or to the ACA post office box. If you are interested in any ACA programs or have any questions, please ask a Board member or myself.

Important Info — Alberta Closed

Full rules for the Alberta Closed are available from the ACA. Here is a summary:

Participants must have obtained 2 participation points in the year before the Closed (essentially since the previous Closed). Qualifying tournaments are worth 1 point. All other rated Alberta events are 1/2 point. (TD's can get up to 1 participation through directing.)

All players wishing to participate in the Alberta Closed (including those who may be selected by rating to fill vacant positions) must register in writing and

their written registration must be received by the ACA on or before March 10th. This makes it the player's responsibility to indicate interest in entering by submitting a registration - the ACA is not required to initiate the process.

Eight participants. Single round robin held on the Easter weekend. Location TBA. Entry fee \$20 (goes towards prize fund; *each qualifying tournament contributes \$1 per entry toward prize fund*; prize fund allocated 1st-50%, 2nd-30%, 3rd-20%). Each candidate must have been an Alberta resident at least 6 months in the year prior to the Closed.

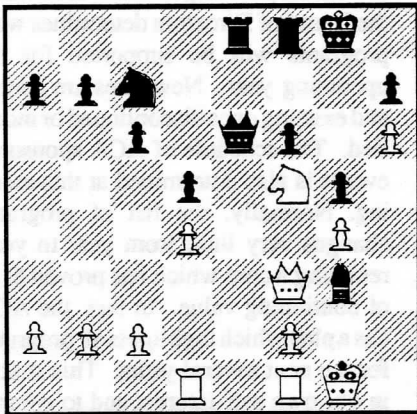
Qualifiers:

current Alberta Closed Champion, Alberta Junior Closed Champion, Calgary and Edmonton Closed Champions, Northern and Southern Alberta Open Champions, Alberta Open Champion, "Rural Candidate" (assuming one or more rural qualifying tournaments are held on or before the January 31 deadline). Refer to the full rules for tiebreaking and the procedure used if a person qualifies more than once. If player(s) are required to fill vacant spots, the highest rated player(s), as of the latest CFC rating list prior to March 10, will be accepted.

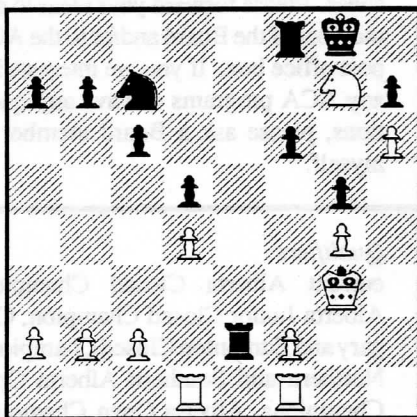
Games from the 1990 Alberta Open Championship

R. South - G. Huber

1.d4 f5 2.Nc3 Nf6 3.Bg5 d5 4.Bf6 ef6
5.e3 c6 6.Bd3 Bd6 7.Qf3 g6 8.h4 Qd7
9.h5 g5 10.g4! f4 11.Bf5 Qc7 12.Bc8
Qc8 13.ef4 Bf4 14.Nge2 Qe6 15.O-O
Bd2 16.Ng3 O-O 17.Nf5 Na6 18.Ne2
Rae8 19.Neg3 Bf4 20.Rad1 Nc7 21.h6
Bg3



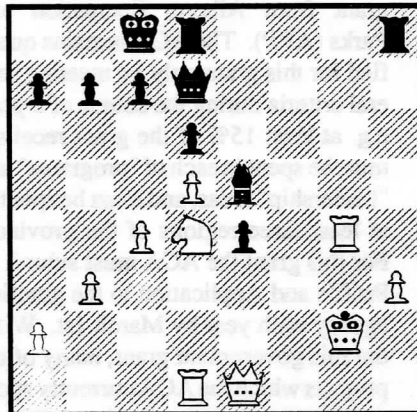
22.Ng7 Bh2+ 23.Kh2 Qd6+ 24.Qg3
Qg3+ 25.Kg3 Re2



26.Rfe1! Rc2 27.Re7 Rf7 28.Rde1
(Black is almost being mated but hangs
on)c5! 29.Nf5 cd4 30.Rf7Kf7 31.Re7+
Kf8 32.Rh7 d3 33.Rd7 Rc1 34.Kg2 d2
(White has had a definite edge for a
while and the obvious h7 would win
but...) 35.Ne3?? Kg8 36.Rg7+ Kh8
37.Rd7 Ne6 38.Rb7 d4 39.Nf5 d1Q
40.Rb8+ Kh7 (0-1).

R. Plante - R. Gardner

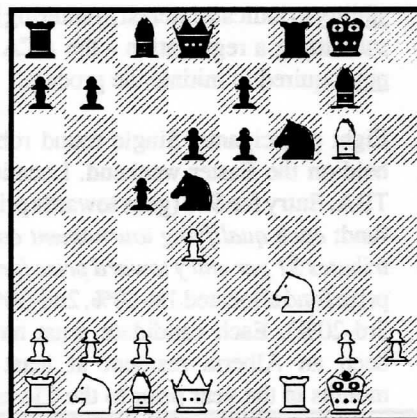
1.c4 e5 2.Nc3 Nc6 3.g3 g6 4.Bg2 Bg7
5.e3 d6 6.Nge2 Be6 7.b3 Qd7 8.d4 Bh3
9.O-O Bg2 10.Kg2 h5 11.h3 f5 12.d5
Nce7 13.f3 h4 14.Qe1 hg3 15.Qg3 Nf6
16.f4 Ne4 17.Qe1 ef4 18.ef4 g5 19.Be3
gf4 20.Bf4 Ng6 21.Rd1 Nf4+ 22.Rf4
Be5 23.Ne4 fe4 24.Rg4 O-O-O 25.Nd4



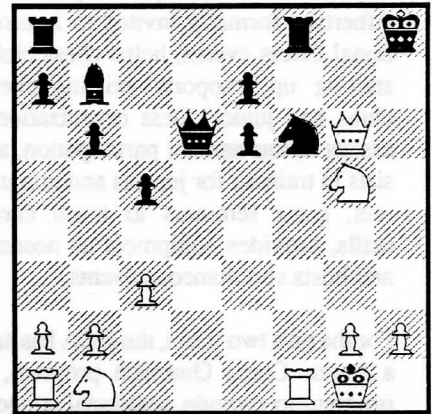
Rh3! 26.Qe4 Rh2+ 27.Kg1 Ra2 28.Rf1
Bd4+ 29.Qd4 Qh7 30.Qf4 Kb8 31.Rh4
Qc2 32.Qg5 Re8 33.Qg3 b6 34.Rh2
Qh2+ 35.Qh2 Rh2 36.Kh2 Re2+
37.Kg1 Rb2 38.Rf3 Kb7 39.Kf1 b5
40.Ke1 Kb6 41.Kd1 bc4 42.bc4 Rb4
43.Rf4 Kc5 44.Rf7 Rb7 45.Rf4 a5
46.Kc2 a4 47.Rh4 a3 48.Kc3 a2 (0-1).

B. Palcic - S. Chan

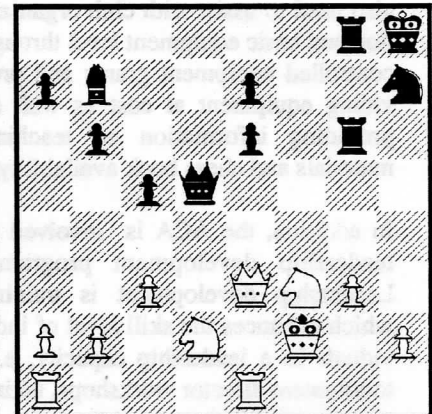
1.e4 d6 2.d4 Nf6 3.Bd3 g6 4.f4 Bg7
5.Nf3 O-O 6.O-O Nbd7 7.f5 c5 8.e5
Nd5 9.e6! fe6 10.fg6 hg6 11.Bg6 N7f6



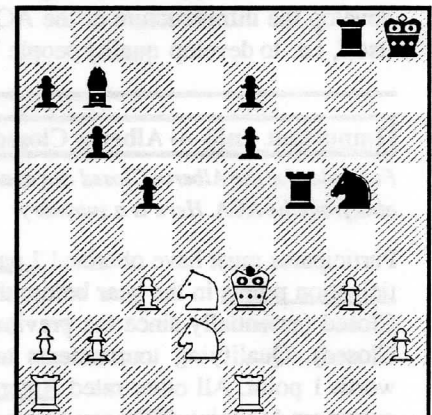
12.dc5 dc5 13.c3 b6 14.Qe1 Qd6
15.Qh4 Bb7 16.Bh6 Bh6 17.Qh6 Nf4
18.Ng5 Ng6 19.Qg6+ Kh8



20.Re1 Qd5 21.Nf3 Rg8 22.Qh6+ Nh7
23.Nbd2 Raf8 24.Kf2 Rf6 25.Qe3 Rfg6
26.g3



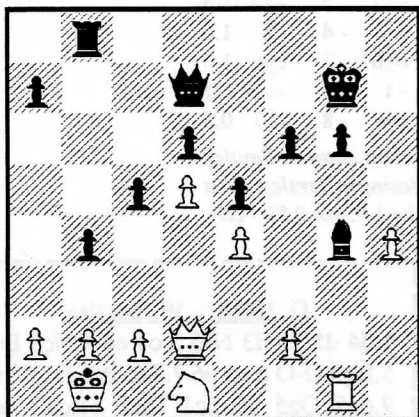
Ng5?! (...Rf6!) 27.Qe5+ Qe5 28.Ne5
Rf6+ 29.Ke3 Rf5 30.Nd3



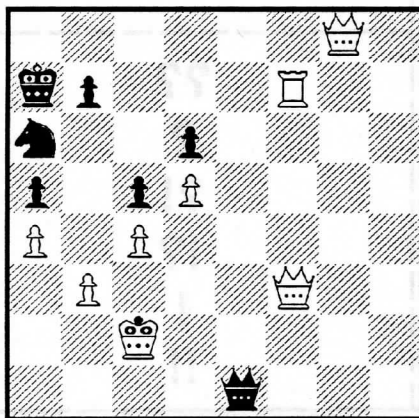
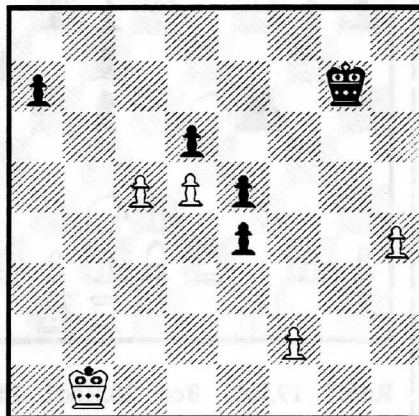
c4?! 31.Nc4 Rf3+ 32.Ke2 Ba6 33.Nce5
Bd3+ 34.Nd3 Rd8 35.Rad1 Rf5 36.Nf4
Rd1 37.Kd1 Nf3 38.Re6 Rf7 39.Re7
Re7 40.Ng6+ Kg7 41.Ne7 Nh2 42.Nc8
Nf1 43.Na7 Ng3 44.c4 Ne4 45.Nc8
Nf2+ 46.Kc2 (1-0).

R. Gardner - G. Kohler

1.e4 d6 2.d4 Nf6 3.Nc3 g6 4.h3 Bg7
5.Be3 O-O 6.Qd2 Nbd7 7.g4 e5 8.d5 h5
9.gh5 Nh5 10.Be2 Ndf6 11.O-O-O Kh7
12.Kb1 Rh8 13.Bf3 Bd7 14.Nge2 b5
15.Rdg1 b4 16.Nd1 c5 17.Ng3 Kg8
18.Nh5 Nh5 19.h4 Rb8 20.Bh5 Rh5
21.Rg5 Rg5 22.Bg5 f6 23.Bh6 Bg4
24.Bg7 Kg7 25.Rg1 Qd7

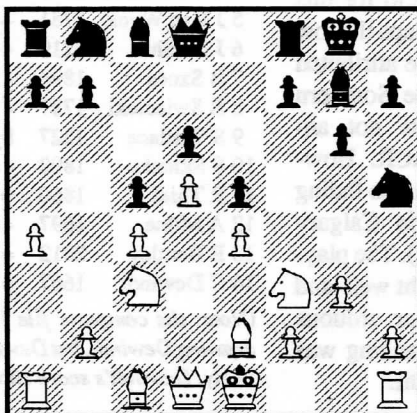


26.Ne3! Bh5 27.Nf5+ Kg8 28.Qh6 Qh7
29.Ne7+ Kh8 30.Ng6+ Bg6 31.Qg6
Qg6 32.Rg6 Rg8 33.Rg8+ Kg8 34.a3
Kg7 35.ab4 cb4 36.c4 bc3 37.bc3 f5
38.c4 fe4 39.c5 (1-0).

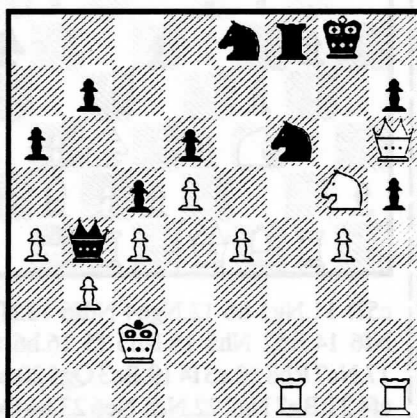


G. Huber - R. Gardner

1.d4 Nf6 2.c4 c5 3.Nf3 g6 4.Nc3 Bg7
5.d5 d6 6.a4 O-O 7.e4 e5 8.Be2 Nh5
9.g3



Bh8?! 10.Bh6 Re8 11.h4 f5 12.Ng5 Bg7
13.Bg7 Ng7 14.Qd2 fe4 15.Nce4 Bf5
16.g4 Be4 17.Ne4 Rf8 18.Qh6 Nd7
19.Ng5 Nf6 20.h5 gh5 21.Bd3 e4
22.Be4 Re8 23.f3 Qa5+ 24.Kd1 Re4
25.fe4 Rf8 26.Kc2 Qb4 27.b3 a6
28.Raf1 Nge8



29.Nh7!! Nh7 30.Rf8+Nf8 31.Rh5 Qe1
32.Rg5+ Kf7 33.Rf5+ Ke7 34.Qg5+
Kd7 35.Rf7+ Kc8 36.Rf8 Qe4+ 37.Kb2
Qe2+ 38.Ka3 Qe1 39.Qf5+ Kb8 40.Qf1
Qb4+ 41.Ka2 Qd2+ 42.Kb1 Qe3
43.Qf3 Qe1+ 44.Kc2 Ka7 45.g5 Nc7
46.Rf7 Kb8 47.g6 a5 48.g7 Na6
49.g8=Q Ka7 (see diagram at left)
50.Qgg2 (Do masters play on down a Q
and the exchange for zippo? - RS) Nb4+
51.Kb2 Qe5+ 52.Qc3 Nd3+ 53.Kc2
Ne1+ 54.Qe1 Qe1 55.Qf2 Qa1 56.Qf6
Qe1 57.Qc3 Qe4+ 58.Kb2 Qe2+
59.Qc2 Qe5+ 60.Ka2 Ka6 61.Qd2 b6
62.Qf2 Qc3 63.Re7 Qh8 64.Qf7 (1-0).

Winners of Prizes (Alberta Open)

Overall

1st
(6-0)
G. Huber
=2nd-4th
(4.5-1.5)
R. Yearwood
R. South
O. Farid

1700-1999

=1st-5th
(4-2)
F. Wong
G. Newton
A. Kuti
J. Sheahan
E. Schocat

1500-1699

1st
(4-2)
L. Wang
2nd
(3.5-2.5)
A. Wu

Unr.-1499

1st
(3-3)
D. Bullas
=2nd-4th
(2-4)
P. Montambault
M. Pennings
S. Chan

Junior

1st
(4-2)
G. Newton
=2nd-4th
(3.5-2.5)
A. Paduch
S. Sia
A. Wu

Southern Alta Open (cont. from p. 1)

However, this year only 14 players entered, including several from out of town. The ACA paid over \$250 for this extravaganza. Perhaps the low attendance could be attributed to the fact that the Southern Alberta Open was not announced in the ACR. However, it could be due to fading interest in chess in Calgary (let's hope not! -LS). The players who came fought well and hard and after four arduous rounds the final standing was as shown at the right.

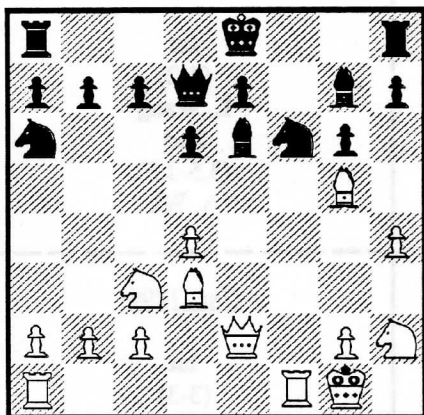
1 R Gardner	2188	=11	+13	+9	+2	3.5
2 B Willis	2103	+8	+3	+6	-1	3.0
3 G Huber	2270	+7	-2	+13	+6	3.0
4 P Usselman	2013	+12	-6	+11	=7	2.5
5 J Van Wyck	1781	—	bye	+10	+9	2.5
6 J Daniluk	2119	+10	+4	-2	-3	2.0
7 B Szucs	1894	-3	=11	+12	=4	2.0
8 B Swiecicki	1737	-2	-9	+14	+11	2.0
9 S Wallace	1527	bye	+8	-1	-5	1.5
10 S Sklenka	1802	-6	=12	-5	+14	1.5
11 R Thiel	1860	=1	=7	-4	-8	1.0
12 A Milne	1697	-4	=10	-7	bye	1.0
13 B Bentley	2012	=14	-1	-3	—	0.5
14 C Dewindt	1667	=13	bye	-8	-10	0.5

(Note: the computer file I received showed Bentley drawing Dewindt, but Dewindt losing to Bentley. Most likely, Dewindt's score should be 1.0, not 0.5? -LS)

Games from the 1990 SAO

J. Daniluk - B. Willis

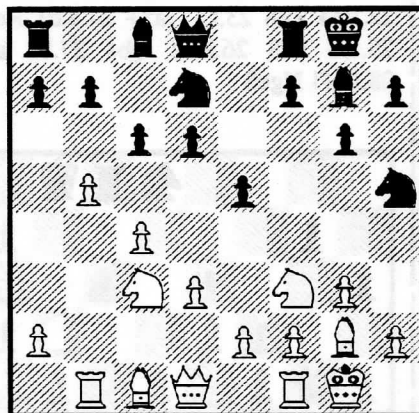
1.d4 f5 2.e4 fe4 3.Nc3 Nf6 4.Bg5 g6 5.f3 ef3 6.Nf3 Bg7 7.h4 d6 8.Qd2 Bg4 9.Nh2 Be6 10.Bd3 Na6 11.Qe2 Qd7 12.O-O



Nb4? 13.Bf6 Bf6 14.Rf6! ef6 15.d5 Nd5 16.Nd5 O-O 17.Nc7 Qc7 18.Qe6+ Kg7 19.Qe3 Qc5 20.Ng4 h5 21.Qc5 dc5 22.Nf2 Rfe8 23.Kf1 Re5 24.Re1 Rae8 25.Re5 Re5 26.Ne4?? c4 27.Bc4 Re4 28.Bd5 Rh4 29.Bb7 Rb4 (0-1).

B. Willis - G. Huber

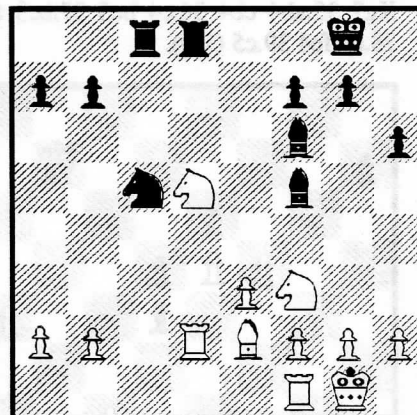
1.Nf3 Nf6 2.g3 g6 3.Bg2 Bg7 4.O-O O-O 5.c4 d6 6.Nc3 Nbd7 7.d3 c6 8.Rb1 e5 9.b4 Nh5 10.b5



c5?! 11.Ng5 h6 12.Nge4 Ndf6 13.Nf6 Nf6 14.Bd2 Nh5 15.Nd5 f5 16.b6 a6 17.Nc7 Rb8 18.e3 f4 19.Bc3 Qg5 20.ef4 ef4 21.Bg7 Ng7 22.Nd5 Ne6 23.h4 Qe5 24.Ne7+ Kf7 25.Re1 Qf6 26.Nc8 Rfc8 27.Bd5 Re8 28.Qg4 h5 29.Qh3 Qf5 30.Qf5 gf5 31.Re2 Kf6 32.Rbe1 Ng7 33.Re8 Ne8 34.Re6+ Kg7 35.Re7+ Kf6 36.Rb7 Rd8 37.Ra7 Ke5 38.Ra8 Ra8 39.Ba8 Nf6 40.Bc6 d5 41.b7 (1-0).

G. Huber - W. Bentley

1.d4 d5 2.Nf3 Nf6 3.c4 e6 4.Nc3 Be7 5.Bg5 O-O 6.e3 h6 7.Bf6 Bf6 8.Qc2 c5 9.dc5 Qa5 10.Rc1 Qc5 11.cd5 ed5 12.Nb5 Qc2 13.Rc2 Bf5 14.Rd2 Na6 15.Be2 Rfd8 16.O-O Nc5 17.Nc7 Rac8 18.Nd5



Rd5!? 19.Rd5 Be6 20.Rdd1 Bb2 21.Nd4 Ba2 22.Rd2 Na4 23.Bb5 Bd4 24.Ba4 (1-0).

J. Daniluk - G. Huber

1.d4 c5 2.d5 g6 3.c4 Bg7 4.Nc3 Bc3 5.bc3 f5 6.Nf3 Nf6 7.Bh6 Qa5 8.Qc2 d6 9.Bg7 Rg8 10.Bf6 ef6 11.Rb1 Nd7 12.e3 b6 13.Rb5 Qa3 14.Rb3 Qa6 15.Qb2 Ne5 16.Ra3 Qb7 17.Be2 g5 18.h3 Qe7 19.Nd2 f4 20.Bh5 Kf8 21.O-O Bf5 22.e4 Bg6 23.Bg6 Rg6 24.Rb1 f3 25.Qb5 fg2 26.Kg2 Rc8 27.Qa4 Rc7 28.Rh1 Nd3 29.Qd1 Rh6 30.Qf3 Nf4 31.Kf1 Rh4 32.Qg3 Qd7 33.e5 de5 34.Ne4 Qf5 35.Qf3 Rd7 36.d6 Rd8 37.Ke1 Ng2 38.Qg2 Re4 39.Kd2 Rd6 40.Kc1 Re2 41.Ra7 Kg8 (0-1).

??
?
?!
!?
!
!!

More Tournament Reports

(also see Junior Section)

ECC Open Championship

by Rob Gardner

Réjean Plante played consistent chess to post a score of 5/5. Second-place finisher Christiaan Dartana lost only to Plante. Cor Dewindt played his typical solid style to win the under-1800 prize with 3 points. Greg Woodward would ward off other challengers for second under-1800.

Against Gerald Aspler, Plante gives up a queenside pawn, but is able to post his pieces aggressively on the kingside:

G. Aspler (1919) - R. Plante (2065)

1.d4 e6 2.c4 d5 3.Nf3 Be7 4.Nc3 Nf6 5.Bg5 h6 6.Bh4 Nbd7 7.e3 0-0 8.cxd5 exd5 9.Bd3 Re8 10.0-0 c6 11.Qc2 Nf8 12.h3 Be6 13.Bg3 Rc8 14.Rfd1 c5 15.dxc5 Bxc5 16.Nd4 Bxd4 17.exd4 a6 18.Qb3 Nh5 19.Bh2 Qg5 20.Kh1 Nf4 21.Bf1 N8g6 22.Re1 Bf5 23.Qa4 b5 24.Qxa6 Bd3 25.Rxe8+ Rxe8 26.Qc6 Re6 27.Qa8+ Kh7 28.g3 Bxf1 29.Rxf1 Nh4 30.Ndl Re2 31.Ne3 Qh5 32.g4 Qg5 33.Bg3 Nf3 34.Qb8 Nhx3 35.Kg2 Qxe3 36.Kxh3 Ng5+ 37.Kh2 Qxd4 38.Qxb5 Rxb2 29 Qa5 Qxg4 40.Qxd5 Qh3+ 41.Kg1 Qg4 42.Ra1 Ne4 43.Kf1 43.Nxg3+ 44.fxg3 Qe2+ (0-1).

R. Plante (2065) - F. Borloi (2008)

1.d4 d5 2.c4 e6 3.Nf3 Nf6 4.Bg5 Be7 5.Nc3 0-0 6.e3 h6 4.Bh4 c6 8.Rc1 Nbd7 9.cxd5 exd5 10.Bd3 Re8 11.0-0 Nf8 12.Bxf6 Bxf6 13.b4 White is aiming to inflict Black with a pawn weakness on the Queenside. 13..a6 14.Na4 Bg4 15.Nc5 Rb8 16.Re1 Ne6 17.a4 Nxc5 18.bxc5 Qc7 19.Rc3 Qa5 20.Rc1 Bxf3 21.gxf3 Re7 22.Re2 Rbe8 23.Rbl Qc7 24.Reb2 Qc8 25.Bf1 Rc7 26.Rb6 Qd7 27.f4 Since Black can currently guard his b-pawn, White begins carrying out a long-term plan of opening up the kingside. 27..g6 28.Qf3 Bg7 29.f5 Qe7 30.Bd3 g5 31.Kg2 f6 32.h4 White's advanced pawns give him a space advantage. This gives him an easier time than Black in getting his pieces to cooperate with one another. 32.Qf7 33.Rh1 Ree7

Here are brief reports based on material submitted to *En Passant*, the national chess magazine. The news may be a bit stale to a number of you, but deserves to be printed in our own provincial newsletter. Some reports may have also been submitted to the ACR and been "misplaced" (such things can happen). However, for any event where the organizer or TD did not submit an ACR report (and only they can know), a "raspberry" is extended on behalf of Alberta's chess players.

Edmonton Spring

Karl Weber beat Ferenc Borloi on his way to his first victory on Canadian soil. Borloi, Mike Sekuloff and Alex Kuti (who was 1st U-1800) tied for 2nd. Bruno Knudskov was 2nd U-1800. (TD: R. Plante).

U of A Open

Jeff Reeve (5-0) was first, heading a 36-player field which included 4 masters. Greg Huber and Réjean Plante were next at 4-1. First in "A" (3.5-1.5) were K. Weber, W. Bentley, F. Wong and G. Aspler. S. Sia also scored 3.5 to win "B", followed by A. Kuti (3). R. Allin won "C" with 3 pts, while M. Bibic and B. Bauer tied for "D" and Unrated. S. Chan was Top Junior. (TD: V. Vejdani).

34.hxg5 fxg5 35.Rh5 Qf6 36.Rb1 Bf8 37.Rbh1 Rh7 38.Qg3 Rc7 39.Qe5 Bg7 40.Qe6 Rh8 41.Qc8+ Kh7 42.Qe6 Rhf8 43.Rb1 After the game, Plante pointed out 43.Qxf6 intending 43...Bxf6 44.Rxh6+ or 43...Rxf6 44.Rxg5. 43...Rc7 44.Qd6 Rff7 45.Rbh1 Kg8 46.Qg3 Kf8 47.f4 gxf4 48.Qxf4 Ke8 49.R1h3 Kd8 50.Rg3 Qe7 51.Rg6 Rf6 52.Rh3 Qf8 53.Rhg3 Kc8 54.Qg4 Black's confined king and awkward pieces should serve as clues for White to be on the alert for sacrifices. Here 54.Qxc7+ wins after 54...Kxc7 55.Rxg7+ Rf7 [55...Kb8 56.Rg8] 56.f6 threatening 57.Rxf7+ Qxf7 58.Rg7. The continuations 58...Rxg7 59.fxg7 Qg8 60.Bh7 and 58...Rd7 59.Bf5 both win for White. 54...Rxg6 55.fxg6+ Kd8 56.Rf3 Qe7 47.Qg3 Qg5 58.Qxg5 hxg5 59.Kh3 Re7 60.Kg4 Bh6 61.Rh3 Bg7 62.Kxg5 Kc7 63.Bf5 b5 64.cxb6+ Kxb6 65.Rh7 c5 66.bxc5+ Kxc5 67.Rxg7 Rxg7 68.Kf6 Rb7 69.g7 Rxg7 70.Kxg7 d4 71.exd4+ Kxd4 72.Kf6 Kc5 73.Ke5 Kb4 74.Bd7 Kc5 75.Be8 Kb6 76.Kd6 Kb7 77.Kc5 Kc7 78.Bc6 (1-0).

Calgary Spring Open

Farzan Nazarian topped the field, followed by John Parrott and Chris Demers. Heading A, B and C "classes" were A. Odachowski, M. Parsons and N. Luyben, respectively. (TD: B. Toth).

ECC Summer Open

Rob Gardner came first at 3.5-0.5, a point ahead of Art Skeel, Geoff Newton and Alex Kuti. (TD: HRH Rocket Rob).

ECC Summer Active

Art Skeel clinched first with 3.5/4. Kurt Lauterwald was second with 3. (TD, donuts: Robbie Gardner).

Heritage Day Open

(One of a series of tournaments staged by Roy Yearwood [ACA Secretary], this one had an extensive report by Roy in the October *En Passant* [#104], and included much background information. Readers wishing to read the whole story should consult that issue of EP. Apologies to Roy for this abbreviated version if he did submit the full stories on this tournament and some of his other tournaments to the ACR only to have them go astray. - LS)

The tournament had 29 participants and was held at the U of C under sponsorship in part by Domino's Pizza and the U of C Chess Club (I believe the ACA also provided \$50, basically equivalent to a "TD honorarium", to each event in Roy's tournament series in 1990 - LS). Rocket Rob Gardner won his second tournament in a row, scoring 5-1 and pocketing \$90 and the Winner's Sweater. In second were Luc Poitras, Steve Fairbairn, Dale Haessel and Andrew Paduch. Danny Kiely won the Upset Prize. First U-2000 was Steve Fairbairn, with Mark Adam and Fred McFaul also being rewarded in that category. U-1500 prizes went to Ron Forhmzway and Bruce Kiely.



ALBERTA JUNIOR CHESS REPORT

(A special section of the Alberta Chess Report, December 1990)



Calgary Junior Chess Club

Meets: Selected Saturdays at its *new location*, Basement, Hounsfield Hts./ Briar Hill Community Hall, 1928-14 Ave NW. Very close to North Hill Shopping Centre. Right by Lion's Park LRT Station.

Info: Ian Drummond (288-4034). Prizes (trophies, books, etc.) awarded. Membership open to anyone born after 1972-01-01. A participating membership (\$1) in the ACA is the only membership requirement. Tourney fees are \$2 elementary; \$2.50 junior high; \$3 senior high. Players are grouped by strength. Some coaching and simultaneous displays may be conducted. New members welcome - bring a friend.

Schedule of Events:

Jan 19: New Year Tourney

Feb 23: Mid-Winter Tourney

Mar 23: Last Chance Tourney

Apr 20: Jr and Sr High School Team (of 4) Championships.

May 11: Elementary School Team (of 4) Championship.

Time: Register at 9:30 a.m. Play begins at 10:00 a.m. and continues until approx. 3:00 p.m., depending on number of players.

Lunch: Bring a bag lunch (no official break for lunch).

Edmonton Junior Chess Club

(Not having received any info to the contrary, we assume this listing is still correct.)

Meets: Main Public Library, Churchill Square.

Info: Nancy Emack (452-4589). Contact Nancy for more info about events. The emphasis is on casual games and instruction, but there will likely be ladder tournaments and occasional rated events. Open to under 18 years of age. No club membership fee, but ACA membership is required.

Leduc Junior Chess Club

Info: August Hangartner (986-0459).

World Under 16 Championship

Canadian Cadet Champion Andrew Paduch's result, according to the *North-ern* (Sept/90), was a score of 5.5/11 (=20th place). The winner was Leningrad's Konstantin Sakaev (9-2), followed at 8 points by FM Eran Liss (ISL) and IM Veselin Topalov (BLG). The ACA provided significant financial support to assist Andrew and his coach, Steven Peter, augmenting that received from the CFC. We look forward to benefiting from a report by Andrew on his participation in this major event.

Awesome August Adventures

Three RR's were held in this one-day event. Adam Wu and Cynthia Wu placed first in two of the RR's. In the third, Sherwin Chan, Bernard Kim and Beatrice Wu tied for first, with Sherwin earning the book prize in a speed chess playoff. (TD: Rob Gardner)

EJCC September Spectacle

Sam Sia had a perfect 3-0 in one 4-player RR. Beatrice Wu and Sherwin Chan were 4.5-.5 in another, with Beatrice winning the book prize this time in a speed chess playoff. David Kim took his group with 5-0. (TD: Rob Gardner)

Reports were unavailable at press time on the Alberta Junior and Cadet, and qualifying events (except for the Northern Alberta Junior). Hopefully, the organizers will soon send in reports...

The ACA provides financial support to senior, cadet and junior age players to help them attend national (sometimes international) invitational championships (air fare for our champions, and for other qualifiers if possible). In return we ask little — only that the persons who so benefit provide a report for publication in the ACR. We trust that this obligation will be met by those who are assisted to attend future events and by those who have been to a championship but have not yet submitted a report.

Northern Alberta Junior Playoff by Rocket Rob Gardner (TD)

Adam Wu had some difficult positions, but managed to win all his games. Geoff Newton scored 4 points for a convincing second-place finish. Both players qualified to the Alberta Junior.

		1	2	3	4	5	6	
1 A Wu	1585	x	1	1	1	1	1	5
2 G Newton	1794	0	x	1	1	1	1	4
3 M Roth	1431	0	0	x	1	1	1	3
4 G Bukowski	1418	0	0	0	x	1	1	2
5 S Chan	1333	0	0	0	0	x	+	1
6 C Adams	1416	0	0	0	0	0	- x	0

Newton - Bukowski demonstrates what can happen when White gets strong outposts early in a Sicilian:

G. Newton - G. Bukowski

1.e4 c5 2.Nf3 d6 3.d4 cxd4 4.Nxd4 Nc6 5.Nc3 e5 *A move like this, giving up Black's ability to defend d5 with a pawn, will often lead to a fight for d5.* 6.Ndb5 a6 7.Na3 Nge7 8.Nc4 *On c4, the knight attacks b6, which is another potential outpost since it cannot be guarded by a Black pawn. The knight can also go to e3 to strengthen White's grip on d5.* 8...Ng6 9.Be3 b5 10.Nb6 Rb8 11.Ncd5 Bb7 12.Be2 Be7 13.Bg4 Na5 14.Nd7 Rc8 15.Bb6 Qxd7 16.Bxd7+ Kxd7 17.Bxa5 Bxd5 18.exd5 *Black played on out of frustration, but eventually... (1-0).*

A. Wu - G. Newton

1.e4 c5 2.Nc3 e6 3.f4 Nc6 4.Nf3 g6 5.d4 *In developing his bishop to g7, Black gives up some control of d6. Therefore, White creates a semi-open file on which to exert force.* 5...cxd4 6.Nxd4 a6 7.Be3 Bg7 8.Qd2 Nge7 9.0-0 d5 10.exd5 Nxd5 11.Nxd5 Qxd5 12.Nxc6 bxc6 13.Bc4 Qxd2+ 14.Rxd2 0-0 15.Rd6 Bb7 16.Rhd1 Bf6 17.Bd4 Be7?? *A blunder in a difficult position. 18.Rd7 will win a piece, so... (1-0).*

**** CLUBS and ORGANIZERS ****

We ask Clubs to ensure information in the ACR is **correct** (a schedule of activities would be an asset). Also, those planning "weekend" tournaments are asked to send in *details well in advance*.



So, what's the story about reporting events to the ACR?

Please do so!

For rated tournaments, at least, a Tournament Director must send the CFC a rating report and usually includes a written report with it for *En Passant*, so all that is needed is to make a photocopy and send it to the ACR! (You might even want to provide a perhaps more in-depth report written especially for your fellow Alberta chessplayers.)

Director's (and organizers and clubs) have a **responsibility** to their players to follow up with a report, and to keep them informed of events planned.



ALBERTA CHESS CLUBS

(see Junior Section for junior clubs)

Calgary CC

Meets: New Rosedale Hall, 800-11 Ave NW. Wednesday, 7:00-11:00.

Info: Bill Rusk (phone 286-6137, or write #9, 3302-50 St NW, Calgary T3A 2C6).

Edmonton CC

Meets: Oliver Community Hall, 10326-118 St, on Thursday evenings, approx. 7:00-12:00.

Info: Rob Gardner (469-4925), George Heagle (425-1471), Club (482-1484, answering machine, 24 hrs). Membership required for tournament play (else a surcharge may be applied).

ECC Schedule. Jan-Sept. 1991

(entry fees \$10 adult , \$7 junior - unless otherwise specified)

Jan 3 - Feb 7. Edmonton Closed Re-serves (open to all). 6 rd. 45/2 hr then 15/30 min. \$20 adult, \$15 junior.

Jan 26-27. Feb 2-3. Edmonton Closed. 2-weekend 8-player round robin. Players to be invited by rating. Winner qualifies to the Alberta Closed.

Feb 14 - Mar 14. Holowach Challenge (1600 & over). **Shnitka Memorial** (under 1600). 5 rd. 45/2 hr then 15/30 min. \$15 adult, \$10 junior.

Mar 21 - Mar 28. Active Chess Tournament (rated). 4 rd.

Apr 4 - May 2. Spring Open. 5 rd. Faster time control: 40/90 min then 15/30 min. \$15 adult, \$10 junior.

May 9. Speed Chess Tournament.

May 16 - Jun 6. Memories of Fischer Open. 4 rd. 45/2 hr then 15/30 min. Trophies for prizes.

Jun 13 - Jun 27. Summer Open. 3 rd. 40/100 min then 15/30 min.

Jul 4 - Jul 11. Active Chess Tournament (rated). 4 rd.

Jul 18 - Aug 1. Summer Round Robins. Groups of 4 determined by rating. 3 rd. 45/2 hr then 15/30 min.

Aug 8. Speed Chess Tournament.

Aug 15 - Aug 29. August Open. 3 rd. 45/100 min then 15/30 min. Book prizes.

Sep 5. ECC Annual General Meeting.

Grande Prairie CC

Meets: St. Patrick's Community School Library, Thursday, 7:00-10:00.

Info: Phil Lefkowitz (phone 538-1903, or write 9305-74 Ave, Grande Prairie T8V 6G2).

Hinton CC

Meets: Hinton Municipal Library, with "group play" on Wednesdays, 5:00-8:00, and "casual play" during regular library hours.

Info: Bob McIntyre (phone 865-2778, or write 270 Eaton Dr, Hinton T0E 1B0).

Medicine Hat CC

Meets: Thursday evenings, 7-10, at the Public Library.

Info: Jerome Fitzgerald (phone 526-4125).

Northern Communities CC (Boyle)

Meets: at Branko's home (call him for directions).

Info: Branko Georgijevic (phone 689-2476, or write Box 558, Boyle T0A 0M0).

Red Deer CC

Meets: Wednesday, 7:00 p.m. at "Club 89", 4950 Ross St.

Info: Brad Willis or Brian Murdoch, (both at 343-6664).

University of Alberta CC

Meets: SUB 030D (basement), approx. 11:00-4:00 weekdays. Box 92, Students Union Building, U of A, Edmonton.

Info: Craig Vokey (492-7252, club office).

University of Calgary CC

Meets: MacEwan Hall, room 209L, September to March (closed for the summer).

Fees: UCCC membership required for Calgary players (\$3 students; \$4 others).

Info: Taco Van Ieperen, President and Special Events Coordinator (phone 295-0139 or write 1311-56 Ave NW, Calgary T2K 5M2).



*** NEW YEARS OPEN ***

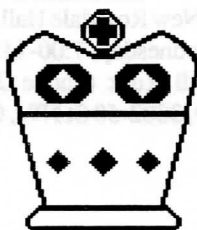
January 12-13, Edmonton
L'Express lounge (room 142; Sunday)
Students Union Building
(114 St & 89 Ave)
University of Alberta

Registration: 9:15-10:00 a.m.
\$20 senior \$15 junior+1st time players
(CFC/ACA membership required)

4-round Swiss System
Sat-ASAP/3:00; Sun-10:00/3:00
(Time Control: 45/2, 30/1)

Prizes based on entries
No smoking and no computers
Please bring a chess clock if possible

For more info
Craig Vokey 433-5539
or U of A Chess Club 492-7252



Future Weekend Tournaments

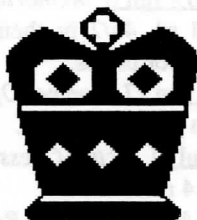
When details are received for these (and other) tournaments, we will attempt to publish them in the ACR with enough lead time for you to plan your participation. If you don't see such a notice, you may wish to contact the organizer before attending.

SWAN CITY OPEN

March 23, Grande Prairie
Format similar to Trumpeter Classic
(Organizer: Phil Lefkowitz)

U OF A OPEN

"late April", Edmonton
Format similar to New Years Open
(Organizer: Craig Vokey)



*** TRUMPETER CLASSIC ***

Saturday, January 12, Grande Prairie
(4th Tournament in the BC-Alta
Peace River Grande Prix)
Trumpeter Motor Inn
(across from Prairie Mall)

4 Rd SS, rated Active Chess

Registration 9:00-9:45 a.m.
EF: \$10 adult; \$5 junior
(CFC membership required)

Time Control
30 min each side, "sudden death"

Rounds: 10:00, 11:30, 1:30, 3:00

Prizes, Open and Novice, each section
1st-30% of prize fund, 2nd-20%

No smoking and no computers
Please bring a chess clock if possible

Organizer — Phil Lefkowitz
9305-74 Ave, Grande Prairie T8V 6G2
(phone 403-538-1903)

*** NORTHERN ALBERTA OPEN ***

February 16-17, Edmonton
Room 032 (Saturday) and
L'Express lounge = room 142 (Sunday)
Students Union Building
(114 St & 89 Ave)
University of Alberta

Registration: 9:00-9:40 a.m.
\$20 senior \$15 junior+1st time players
(CFC/ACA membership required)

5-round Swiss System
Sat-10/2:30/7; Sun-9:30/2
(Time Control: 40/1:50, 15/0:30)

Prizes based on entries
No smoking and no computers
Please bring a chess clock if possible



Advance Entries!

(mail before Feb. 7)

ACA/NAO, Box 11839 Main P.O.
Edmonton T5J 3K9

{Write cheques to: Leonard Steele}

- please check in at registration time -

A draw will be held among advance entries (if at least 10 enter in advance) for a free copy of Batsford Chess Openings, 2nd ed, so why not enter now?

(This tournament is an
Alberta Closed Qualifier.)

*** MUKLUK OPEN ***

February 16-17, Ft. St. John, BC
(5th Tournament in the BC-Alta
Peace River Grande Prix)
Artspace Information
and Ticket Centre
10003-100 St

4 Rd SS

Registration 9:00 am Saturday, on site
EF: \$20 adult; \$15 junior
No entry fee for new, unrated players
(CFC membership required)

Time Control
45/90 min, then 30 min sudden death
Rounds: Sat-9:45/2:00 Sun-9:00/1:00

Prizes, Open and Novice (under 1700)
1st-30% of prize fund, 2nd-20%
(each section)

No smoking and no computers
Please bring a chess clock if possible

Organizer — Larry Stutzman
9708-112 Ave, Ft. St. John, BC V1J 2W3
(phone 785-7830)