

ALBERTA CHESS REPORT

A Newsletter Published By The Alberta Chess Association

August 2002

Vol. 27, No. 3

ALBERTA CHAMPION—2002 “DALE HAESSEL”

The Alberta Closed

By John Quiring, TD

The Alberta Closed was held in Edmonton from February 16-18. The format: a 7 player round robin competition among the province's top players. Historically, the Closed was held on the Easter weekend, however the CFC scheduled the Canadian Closed at the end of March. This meant that all the all the qualifiers including the Alberta Closed, needed to be completed much earlier than normal. Most Albertans have a holiday on February's family day, so that three day weekend became a chess weekend. Last year, Dale Haessel won the Closed with the home field advantage, as the tournament was held within a few blocks of his home in Calgary. This year he won on the road, coming from behind to score 5/7, winning clear first and \$300. He won his last three games, passing Greg Huber (half point in his last three games) and Jeff Reeve (one point in his last three games). Rob Gardner also won his last three games after a poor start, to squeak into 2nd place with 4.5/7, worth \$200, and the third place prize of \$100 went to Jeff Reeve with 4/7. Two of the players were in their first Closed tournament. Kris Boehmer of Calgary had on previous occasions narrowly missed qualifying for the Closed based on rating, but was successful this year. Brandon Eshleman, also of Calgary, qualified for the Closed by winning the Alberta Junior (at a age 11!!). He was by far the lowest rated player, but I've noticed in my years of running the Closed that the lowest rated players tend to pull their game to a higher level. That occurred again this year, as the cross-table shows. Congratulations to Dale Haessel for winning the Alberta Closed. We wish him good luck as he travels to Vancouver for the Canadian Championship. Now let's talk about chess equipment. Most players know that Black has the choice of what board and clock to use. Unfortunately, they "know"

something that is not quite true. The rule reads "Unless the organizers have provided standard equipment or designated preferred equipment for all players, Black has his choice of ... equipment ...". In tournaments sponsored by the ACA (like the Alberta Closed), the organizer DOES provide standard equipment, so Black does NOT have the option. This became an issue during the Closed, because Dale Haessel likes to use his own clock, a digital clock. If his opponents don't care, then I as Tournament Director don't care either. But some people think a player has an advantage if he uses his own equipment, and several of Dale's opponents asked to use a neutral clock, which I provided. This caused Dale a bit of consternation, but the rule is clear. When I'm playing, I don't mind using a digital clock. But as the Tournament Director, I was not unhappy about removing Dale's digital clock. I think digital clock makers have a few issues to sort out and my objections are as follows:

1) *During a game, the TD should be in a position to fix clocks that are set incorrectly, and impose time penalties when warranted. This means the TD has to know how to operate every digital clock brought by the players. That is asking too much of the TD.*

2) *All digital clocks count the number of times the clock is pressed, and assume it is*

the same as the number of moves that are made. When the number of clock presses reaches the number of moves in the first time control, the clock automatically switches to the second time control. But what if the clock is pressed too many or too few times?

Example 1: The game is J. Quiring vs. D. Bertrand a couple of years ago. Quiring adjusts a piece and pushes the clock without having moved. Bertrand pushes the clock back, and Quiring feels a bit dumb.

Example 2: A player moves, his opponent responds immediately and neither player pushes the clock.

Example 3: Player A makes a move and hits the clock, but he knocked over a couple of pieces. His opponent hits the clock back immediately, saying "Fix the board on your own time".

In all three examples, the clock's move counter would be incorrect, which would cause it to switch to the second time control at the wrong time. How should the clock work, then? Well, that's very easy to answer. If the TD has to adjust analog clocks after the first time control, he waits for one player's flag to drop, then adjusts

(Continued on page 3)

1. Haessel, Dale	W2	W3	L4	L5	W6	W7	W8	5/7
2. Gardner, Rob	L1	W3	D4	W5	W6	L7	W8	4.5/7
3. Reeve, Jeff	L1	L2	D4	W5	D6	W7	W8	4/7
4. Huber, Greg	W1	D2	D3	L5	L6	D7	W8	3.5/7
5. Yearwood, Roy	W1	L2	L3	W4	W6	L7	L8	3/7
6. Boehmer, Kris	L1	L2	D3	W4	L5	W7	D8	3/7
7. Hughey, Micah	L1	W2	L3	D4	W5	L6	L8	2.5/7
8. Eshleman, Brandon	L1	L2	L3	L4	W5	D6	W7	2.5/7

The Alberta Chess Report (ACR) is published 6 times per year by the Alberta Chess Association. The Editor reserves the right to edit articles for brevity and clarity. Uncredited articles are usually written by the editor; opinions expressed do not necessarily represent those of the ACA.

Editor: Greg Beebe
Past Editors: Len Steele, Dave Gomboc, Grant Brown, Dave Ottosen, John Quiring, Alan Clark.

ACA Board of Directors

President: Ron Hinds
Vice-President: Roy Yearwood
Secretary: Vonnice Eng
Treasurer: Dave Gomboc
Past President: David Ottosen
Directors: Alexander Kazakevich, Bob Davies, Adam Tassone, Tom McKay, Mark Cole, Ford Wong, Bill Taylor, Arthur Odachowski.

Membership Fees

ACA-senior \$5 per year
ACA-Junior \$3 per year
ACA-Participating \$1 per year
Chess Federation of Canada (CFC) Memberships includes ACA: Senior \$38, Junior \$26, Participating \$11

Junior and participating memberships are only available to persons under 17 years of age. Participating members don't get *ACR* or *En Passant*. Provide full name, gender, address, and CFC number (if previous member). If sending info to the ACA phone number is appreciated.

Deadline for next issue: August 25, 2002

Reminder for Tournament Directors

The CFC requires a rating report to be submitted within a month, but strongly urges submissions within seven days. You owe it to participants to submit a report ASAP. Also, please support your newsletter by sending a written or e-mailed (e-mail preferred) report to the ACR. Note the game scores are the property of the tournament directors. Prizes can be withheld until players submit their games.

Submissions

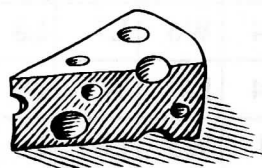
Send e-mails to the editor at:
ACR@albertachess.org

Or mail to

Alberta Chess Association
Box 11839 Main P.O.
Edmonton, Alberta T5J 3K9

ACA WEBSITE:

[Http://www.albertachess.org](http://www.albertachess.org)



EDITORIAL

This issue is dedicated to all the closed tournaments of early 2002. In it you will surely find some great games by your favorite masters along with some good thrashings of your most hated top ranked rivals in the province.

Speaking of rivalries, after perusing the crosstable at the Alberta Closed I came across a couple of wins by young Mr. Eshleman. Once I saw that one of the vanquished was a certain Micah Hughey I took it upon myself to question Mr. Hughey as to how this happened. After a few muttered excuses about a blunder Micah boldly stated, "I cannot wait until 'The Boys' rating catches up to his current playing strength so that when I thrash him the next time I will recapture my stolen points!" Looks like a heated rivalry in the making to me.

Some strange events have conspired to delay this issue including myself preparing on multiple occasions to throw my computer out of as many windows as possible.

So wait no longer, delve into this vault of games and enjoy. But first plug your nose and prepare yourself for one of the cheesiest chess jokes ever. I first heard it from my junior high librarian.

Last Christmas in a local hotel lobby, two chess masters were seen arguing over who was the superior player.

"I once beat 3 GM's in the same tournament", declared the Edmonton Master

"Oh, Yeah!!" retorted the Calgary master, "Well I once bested the world champion in a blindfolded challenge!"

Upon hearing this exchange the hotel manager immediately marched up to the two combatants and escorted them outside.

"What's the problem?!", both masters piped up.

The hotel manager glowered at the pair of culprits and said, "It is Christmas, the last thing anybody needs at this time of year is CHESS NUTS BOASTING IN AN OPEN FOYER!"

TOURNAMENT SCHEDULE

Battle of Alberta

Red Deer

August 10

CCC Active Chess #4

Elephant & Castle, CGY

August 13—August 20

CCC Grand Prix #4 Speed Chess

Elephant & Castle, CGY

August 17

Return of Rock-Lacroix Open

Prince of Wales Armory, EDM

August 17-18

Bridgeland August Junior Active

Bridgeland Chess Center, CGY

August 18

CCC Grand Prix #4 Speed Chess

Elephant & Castle, CGY

August 27

Over/Under 1800

Prince of Wales Armory, EDM

August 31—Sept 1

CCC Fall Classic

Elephant & Castle, CGY

September 3—October 1

ECC Back To School Open

Prince of Wales Armory, EDM

September 5—September 26

8th Annual Medicine Hat Open

South Ridge Village, Day Program Area

550 Spruce Way S.E., MED. HAT

TD; Bill Taylor (403) 526-5484

September 14-15

CJCC Tournament

Parkhill/Stanley Park Community Center, CGY

4013—Stanley Rd. SW

TD: Jim Daniluk

September 15

Edmonton Junior Championship

Prince of Wales Armory, EDM

TD: Alex Kazakevich (780) 484-4362

September 21-22

ECC Halloween Open

Prince of Wales Armory, EDM

October 3-31

CCC Grand Prix #5 Speed Chess

Elephant & Castle, CGY

October 8

Alberta Open

Ramada Hotel, DT CGY

708—8th Ave SW, CGY

TD: Rod Weis(403) 295-2558

October 12-14

Alberta Junior Championship

Coast Hotel

3310-50 Ave, Red Deer

Kim Nguyen or Juraj Pivovarov

(403)242-6741 or (403)269-8240

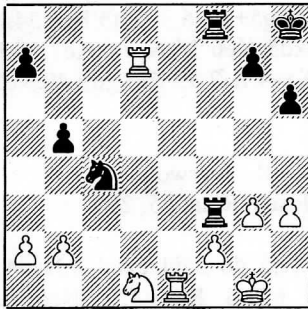
November 2-3

(Continued from page 1)

the c locks. (If you can't figure out why this makes sense, ask the TD!). Digital clocks should work the same way. When the time expires for one player in the first time control, the clock should automatically reset both player's time for the second time control. With both types of clocks, it is up to the players to record (and count) moves; clocks and TDs shouldn't do that. To my knowledge, no digital clock can be set up as I described.

K. Boehmer - M. Hughey
Alberta Closed, Round 1, 2002

1.c4 e6 2.Nc3 d5 3.cxd5 exd5 4.d4 c5 5.Nf3 Nc6 6.g3 Nf6 7.Bg2 Be7 8.0-0 9.Bg5 cxd4 10.Nxd4 h6 11.Bf4 Bg4 12.h3 Be6 13.Nxe6 fxe6 14.Qb3 Na5 15.Qa4 Nc4 16.e4 e5 17.exd5 Nb6 18.Qb3 exf4 19.d6+ Kh8 20.dxe7 Qxe7 21.Rae1 Qc5 22.Qb5 Qc7 23.Qe5 Qxe5 24.Rxe5 f3 25.Bxf3 Nfd7 26.Re3 Nc4 27.Re7 Rxf3 28.Rxd7 Raf8 29.Nd1 b5 30.Re1



Nxb2 31.Nxb2 Rxf2 32.Nd3 Rxa2 33.Nf4 Rc8 34.Nh5 b4 35.Nxg7 b3 36.Nh5 Kg8 37.Rg7+ Kh8 38.Rb7 1-0

D. Haessel - R. Gardner
Alberta Closed, Round 1, 2002

1.c4 g6 2.g3 Bg7 3.Bg2 d6 4.Nc3 e5 5.e4 Ne7 6.d3 0-0 7.Nge2 Be6 8.0-0 c6 9.f4 Qd7 10.Rb1 Bh3 11.Be3 Bxg2 12.Kxg2 Na6 13.d4 exf4 14.Nxf4 Rae8 15.Qd2 Nc7 16.d5 c5 17.Nd3 Kh8 18.Bf4 Ng8 19.Rbe1 f6 20.a3 g5 21.Be3 b5 22.b3 a5 23.e5 fxe5 24.Bxg5 bxc4 25.bxc4 Qg4 26.Re4 Qh5 27.Ree1 Rxf1 28.Rxf1 Nh6 29.Ne4 Qg6 30.Qe2 Nf5 31.Ndf2 Nd4 32.Qg4 Rg8 33.Bd2 Nb3 34.Qxg6 hxg6 35.Bg5 Ne8 36.Ng4 Rf8 37.Be7 Rxf1 38.Kxf1 Kg8 39.a4 Bf8

40.Bd8 Kf7 41.Ng5+ Kg8 42.Ke2 Bg7 43.Kd3 Kf8 44.Ne4 Nd4 45.Bxa5 Ke7 46.Bd2 Kd7 47.h4 Nc7 48.Ne3 Nf5 49.Ng2 Nh6 50.Bg5 Nf7 51.Be3 Bh6 52.g4 Bxe3 53.Nxe3 Na6 54.g5 Ke7 55.Ng4 Nb4+ 56.Kc3 Nd8 57.Ngf6 Nf7 58.h5 gxh5 59.g6 Nh6 60.Nxh5 Ng8 61.a5 Na6 62.g7 Kf7 63.Nxd6+ Kg6 64.Ng3 Kxg7 65.Nge4 Kg6 66.Nb7 Kf5 67.Nbxc5 Nf6 68.Nd6+ 1-0

J. Reeve - G. Huber
Alberta Closed, Round 1, 2002

1.e4 c5 2.Nf3 d6 3.Bb5+ Bd7 4.Bxd7+ Qxd7 5.c4 e5 6.Nc3 g6 7.Nd5 Bg7 8.d3 Nc6 9.a3 Nge7 10.0-0 0-0 11.Bd2 Nd4 12.Nxd4 exd4 13.Nxe7+ Qxe7 14.b4 b6 15.a4 f5 16.f3 fxe4 17.fxe4 Qh4 18.g3 Rxf1+ 19.Qxf1 Qg4 20.Kg2 Rf8 21.Qd1 Qd7 22.b5 h5 23.Qe2 Be5 24.Rf1 Rxf1 25.Qxf1 Qf7 26.Qxf7+ Kxf7 27.a5 Bf6 28.axb6 axb6 29.Kf3 g5 30.Be1 g4+ 31.Ke2 1/2-1/2

R. Yearwood - B. Eshleman
Alberta Closed, Round 1, 2002

1.d4 Nf6 2.Nf3 g6 3.Bf4 Bg7 4.e3 d5 5.Nbd2 Bf5 6.Ne5 Nbd7 7.g4 Be6 8.Be2 Nxe5 9.Bxe5 0-0 10.Bf3 c5 11.Qe2 c4 12.c3 b5 13.h4 Ne8 14.Bg3 h6 15.g5 h5 16.e4 dxe4 17.Qxe4 Nc7 18.Qb7 Rc8 19.Qxa7 Bd5 20.Qc5 Bxf3 21.Nxf3 Qd7 22.Ne5 Qf5 23.0-0-0 Ne6 24.Qxe7 Rfe8 25.Qb7 Nf4 26.Rhe1 Bxe5 27.dxe5 Nd3+ 28.Rxd3 cxd3 29.Qe4 Red8 30.Kd2 Qe6 31.b3 Qa6 32.a4 Qe6 33.Qb4 bxa4 34.Qxa4 Ra8 35.Qb5 Ra2+ 36.Ke3 Qg4 37.e6 Re2+ 38.Rxe2 Qxe2+ 39.Kf4 Qg4+ 40.Ke3 Qxe6+ 41.Be5 d2 0-1

G. Huber - D. Haessel
Alberta Closed, Round 2, 2002

1.e4 c5 2.Nf3 d6 3.d4 cxd4 4.Nxd4 Nf6 5.Nc3 a6 6.f3 e5 7.Nb3 Be6 8.Be3 Nbd7 9.Qd2 Be7 10.g4 h6 11.0-0-0 b5 12.Kb1 Nb6 13.Na5 Qc7 14.Bxb6 Qxb6 15.Nd5 Nxd5 16.exd5 Bd7 17.h4 b4 18.Nc6 Bxc6 19.dxc6 Qxc6 20.Qxb4 d5 21.Qb3 Rd8 22.c4 dxc4 23.Rxd8+ Bxd8 24.Bxc4 0-0 25.Qd3 a5 26.g5 e4 27.fxe4 hxg5 28.Bd5 Qb6 29.hxg5 Bxg5 30.e5 Bh6 31.Qf5 g6 32.Qh3 Rb8 33.Bb3 Bg7 34.Bxf7+ Kf8 35.Bb3 Bxe5 36.Rf1+ Ke8 37.Ba4+

1-0
R. Yearwood - K. Boehmer
Alberta Closed, Round 2, 2002

1.d4 d5 2.Nf3 Nf6 3.Bf4 c5 4.c3 cxd4 5.cxd4 Nc6 6.e3 Bg4 7.Nbd2 e6 8.Qa4 Bxf3 9.gxf3 Bb4 10.Bb5 Bxd2+ 11.Kxd2 Qb6 12.Rac1 0-0 13.Rc2 Rfc8 14.Rhc1 Nh5 15.Bxc6 Nxf4 16.Bd7 Rxc2+ 17.Qxc2 Qa5+ 18.Qc3 Qxc3+ 19.Rxc3 Ng6 20.Rc7 Rb8 21.Bc8 b6 22.Ba6 Ra8 23.f4 Kf8 24.Bb7 Rb8 25.f5 Ne7 26.fxe6 fxe6 27.Ba6 Ra8 28.Bd3 h6 29.f3 a5 30.Rb7 Nc8 31.a4 Kg8 32.b3 Kf8 33.Bb5 h5 34.Bd7 1-0

M. Hughey - J. Reeve
Alberta Closed, Round 2, 2002

1.d4 Nf6 2.Nf3 g6 3.Nbd2 d6 4.e4 Bg7 5.Bc4 0-0 6.0-0 c6 7.a4 d5 8.Bd3 dxe4 9.Nxe4 Nxe4 10.Bxe4 Nd7 11.Bf4 Nf6 12.Bd3 Bg4 13.c3 Nh5 14.Bg5 h6 15.Be3 e5 16.h3 Bxf3 17.Qxf3 exd4 18.cxd4 Qf6 19.Qg4 Rad8 20.Rfd1 Qd6 21.d5 c5 22.Bc4 b6 23.Ra2 a5 24.b3 Rfe8 25.Re2 f5 26.Qf3 Kh7 27.g3 Be5 28.Rde1 Nf6 29.Bc1 Ne4 30.Kg2 Kg7 31.h4 Rf8 32.h5 g5 33.Rxe4 fxe4 34.Qxe4 Bd4 35.f4 Rde8 36.Qxe8 Rxe8 37.Rxe8 Qd7 38.Re6 g4 39.f5 Bf6 40.Rxb6 Qxf5 41.Rb7+ Kh8 42.Rb8+ Kh7 43.Rb7+ Kh8 44.Rb8+ Kg7 45.Rb7+ Kf8 46.Bxh6+ Ke8 47.Bf4 Qe4+ 48.Kf1 Qf3+ 49.Ke1 Bc3+ 50.Bd2 Qe3+ 51.Kf1 Bxd2 0-1

B. Eshleman - R. Gardner
Alberta Closed, Round 2, 2002

1.e4 g6 2.d4 Bg7 3.Bc4 c6 4.Nc3 d6 5.Nf3 Qc7 6.Bb3 Nf6 7.0-0 0-0 8.Bf4 Nh5 9.Be3 Nd7 10.Ne2 b5 11.a4 Bb7 12.c3 a6 13.Qd2 c5 14.Bc2 Nhf6 15.Ng3 Ng4 16.Bg5 f6 17.Bh4 g5 18.Nxg5 fxg5 19.Qxg5 Ndf6 20.Nf5 e6 21.Nxd6 Qxd6 22.e5 Qd5 23.f3 cxd4 24.exf6 Qxg5 25.Bxg5 Bxf6 26.Bxf6 Nxf6 27.cxd4 Bd5 28.f4 Rac8 29.Bd3 Bc4 30.Rf3 Bxd3 31.Rxd3 Nd5 32.axb5 Nxf4 33.Re3 axb5 34.g3 Nh3+ 35.Kg2 Ng5 36.Re2 Rc6 37.Ra5 Rf5 38.h4 Nf7 39.Ra7 Rd6 40.Re7 Nd8 41.Re4 h5 42.g4 Rf7 43.Re8+ Rf8 44.Rxf8+ Kxf8 45.gxh5 Nc6 46.Rg4 Rxd4 47.Rg5 Rxh4 48.Rxb5 Kf7 49.Kg3 Rh1 50.Rc5 Ne7 51.b4 Nf5+ 52.Kg4 Kf6

(Continued on page 4)

(Continued from page 3)

53.b5 Rh4+ 54.Kf3 Rxh5 55.b6 Nd4+ 0-1

J. Reeve - R. Yearwood
Alberta Closed, Round 3, 2002

1.e4 d5 2.exd5 Qxd5 3.Nc3 Qd8 4.d4 c6 5.Bc4 Nf6 6.Nf3 Bf5 7.Bg5 h6 8.Bh4 e6 9.Qe2 Bb4 10.0-0 Qa5 11.Bxf6 gxf6 12.d5 Bxc3 13.dxe6 Be5 14.exf7+ Kf8 15.Nh4 Bh7 16.f4 Bd6 17.Qe8+ Kg7 18.Rf3 Na6 19.Rg3+ Bg6 20.f8Q+ 1-0

D. Haessel - M.Hughey
Alberta Closed, Round 3, 2002

1.c4 e6 2.g3 d5 3.Bg2 c5 4.cxd5 exd5 5.Nf3 Nf6 6.d4 Nc6 7.0-0 Be7 8.Nc3 0-0 9.Bg5 cxd4 10.Nxd4 h6 11.Be3 Bg4 12.Qb3 Qd7 13.Rfd1 Rfd8 14.Qa4 Bh3 15.Bh1 Ng4 16.Nxd5 Nxe3 17.Nxc6 bxc6 18.Nxe3 Qe6 19.Qxc6 Qe5 20.Nc4 Qxe2 21.Re1 Qc2 22.Rac1 Qd3 23.Be4 Qd4 24.Qxa8 Rxa8 25.Bxa8 Bc5 26.Re2 Be6 27.b3 h5 28.Rd2 Qf6 29.Nd6 Qh6 30.Ne4 Bb6 31.h4 Bg4 32.Bd5 Be3 33.fxe3 Qxe3+ 34.Kh2 Bf5 35.Rcc2 1-0

K. Boehmer - B. Eshleman
Alberta Closed, Round 3, 2002

1.c4 Nf6 2.Nf3 g6 3.Nc3 d5 4.d4 Bg7 5.g3 c6 6.cxd5 Nxd5 7.Bg2 Nxc3 8.bxc3 c5 9.0-0 Nc6 10.e3 0-0 11.Rb1 Qa5 12.Qb3 Bf5 13.Rb2 Rab8 14.d5 Ne5 15.Nxe5 Bxe5 16.e4 Bd7 17.Bd2 Qc7 18.Bh6 Bg7 19.Bf4 Be5 20.Bh6 Bg7 21.Bxg7 Kxg7 22.c4 b5 23.Qc3+ f6 24.cxb5 Rxb5 25.Rxb5 Bxb5 26.Rc1 Rc8 27.Qa3 Kf7 28.Bh3 Bd7 29.Bxd7 Qxd7 30.Rxc5 Qd6 31.Ra5 Qxa3 32.Rxa3 Rc7 33.Ra6 f5 34.e5 h5 35.h4 e6 36.Rxe6 Rc5 37.Ra6 Rxd5 38.Rxa7+ Ke6 39.f4 Rd2 40.Ra6+ Kf7 41.a4 Ra2 42.a5 Ra3 43.Kg2 Ra2+ 44.Kh3 Ra3 45.Ra8 Ke6 46.a6 Kd5 47.Rd8+ Ke6 48.Rf8 Kd5 49.Rf6 Ke4 50.Rb6 Kf3 51.e6 Ra1 52.Rb3+ Kf2 53.Rb2+ Kf3 54.e7 Rh1+ 55.Rh2 Rg1 1/2-1/2

R. Gardner - G. Huber
Alberta Closed, Round 3, 2002

1.g3 c5 2.Bg2 Nc6 3.c4 Nf6 4.Nc3 e6 5.e4

a6 6.f4 d6 7.e5 Nd7 8.exd6 Bxd6 9.Ne4 Be7 10.d3 Nf6 11.Nxf6+ Bxf6 12.Bxc6+ bxc6 13.Nf3 0-0 14.Ne5 Bxe5 15.fxe5 Qd4 16.Qe2 f6 17.Bf4 Rb8 18.0-0 Rb7 19.Rd2 g5 20.Be3 Qxe5 21.Qf2 Qf5 22.Qxf5 exf5 23.Bxc5 Re8 24.Kd1 Rd7 25.Re1 Rxe1+ 26.Kxe1 Kf7 27.d4 Rd8 28.Bb6 Re8+ 29.Kf2 Be6 30.b3 h5 31.a4 Rb8 32.a5 Rh8 33.Rc2 h4 34.Kg1 hxg3 35.hxg3 Rh3 1/2-1/2

R. Yearwood - D. Haessel
Alberta Closed, Round 4, 2002

1.d4 Nf6 2.Nf3 g6 3.Bf4 Bg7 4.e3 d6 5.Bc4 0-0 6.c3 Nbd7 7.Nbd2 h6 8.h3 c6 9.a4 Ne8 10.Qc2 Kh7 11.h4 Kh8 12.h5 e5 13.Bg5 f6 14.Bxh6 Bxh6 15.Qxg6 Bxe3 16.fxe3 d5 17.Bd3 Qe7 18.Qh6+ Kg8 19.Rh3 Qg7 20.Qxg7+ Kxg7 21.Rg3+ Kh6 22.Rg6+ Kxh5 23.g4# 1-0

B. Eshleman - G. Huber
Alberta Closed, Round 4, 2002

1.e4 c5 2.Nf3 e6 3.c3 Nf6 4.e5 Nd5 5.d4 cxd4 6.cxd4 d6 7.Bc4 Nc6 8.0-0 Be7 9.Re1 0-0 10.Bxd5 exd5 11.Nc3 dxe5 12.Nxe5 Be6 13.Nxc6 bxc6 14.Qc2 Bd6 15.Be3 Qh4 16.h3 Rfe8 17.Qd2 h6 18.Rac1 Bd7 19.Na4 Re6 20.Nc5 Rg6 21.Nxd7 Qxh3 22.f3 Qxd7 23.Bf4 Rb8 24.Bxd6 Qxd6 25.Rc5 Rg5 26.Rec1 Rb6 27.b3 Rh5 28.Qd3 Qg3 29.R5c2 Qh2+ 30.Kf2 Rg5 31.Rg1 Qg3+ 32.Kf1 Rg6 33.Re2 Rb8 34.Qa6 Qc7 35.Kf2 c5 36.Qd3 c4 37.bxc4 dxc4 38.Qc3 Qg3+ 39.Kf1 Rb1+ 40.Re1 Rgb6 41.Ke2 Re6+ 0-1

M. Hughey - R. Gardner
Alberta Closed, Round 4, 2002

1.e4 c5 2.Nf3 d6 3.c3 Nf6 4.Bd3 Nc6 5.Bc2 Bg4 6.0-0 e5 7.Re1 Be7 8.d3 Qd7 9.Nbd2 0-0-0 10.a3 Rdg8 11.b4 g5 12.Ba4 Qc7 13.bxc5 dxc5 14.Bxc6 bxc6 15.Rb1 Kd8 16.Qb3 Bc8 17.Nc4 Nd7 18.Ne3 g4 19.Nd2 Nf8 20.Nf5 Bxf5 21.exf5 Bg5 22.Qc4 Bxd2 23.Bxd2 Nd7 24.Qxf7 Rf8 25.Qh5 Nf6 26.Bg5 Kc8 27.Bxf6 Rxf6 28.Qxg4 Rhf8 29.Qc4 R8f7 30.g4 h5 31.f3 hxg4 32.fxg4 Rg7 33.Re4 Rxf5 34.Qe6+ Qd7 35.Qxd7+ 1-0

K. Boehmer - J. Reeve
Alberta Closed, Round 4, 2002

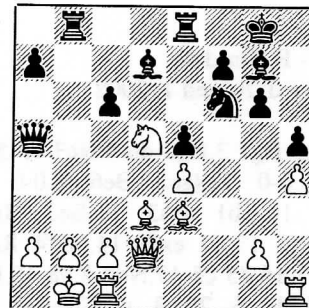
1.c4 e5 2.Nc3 Nc6 3.g3 g6 4.Bg2 Bg7 5.d3 d6 6.e3 Nge7 7.Nge2 0-0 8.0-0 Bg4 9.Rb1 Qd7 10.Re1 Bh3 11.Bh1 h5 12.d4 exd4 13.exd4 Bg4 14.Qa4 Rfe8 15.Bg5 Qf5 16.Qb5 Bxe2 17.Nxe2 Nxd4 18.Nxd4 Bxd4 19.Qxf5 Nxf5 20.b3 c6 21.Rbd1 Rxe1+ 22.Rxe1 f6 23.Bf4 Kf7 24.Kf1 Rd8 25.Be4 Ng7 26.Bh6 Ne6 27.Bc1 f5 28.Bg2 Re8 29.Ba3 Bc5 30.b4 Bd4 31.b5 cxb5 1/2-1/2

J. Reeve - B. Eshleman
Alberta Closed, Round 5, 2002

1.e4 e5 2.Nf3 Nc6 3.Bb5 a6 4.Bxc6 dxc6 5.0-0 Bd6 6.d4 exd4 7.Qxd4 f6 8.Be3 Ne7 9.Nbd2 0-0 10.Nc4 Be6 11.Nxd6 cxd6 12.c4 d5 13.exd5 cxd5 14.c5 Nc6 15.Qf4 Qa5 16.a3 Rad8 17.Rfe1 Rfe8 18.h4 Bf7 19.Bd4 Bg6 20.Rxe8+ Rxe8 21.Qd6 Nxd4 22.Nxd4 Re1+ 23.Rxe1 Qxe1+ 24.Kh2 Qe5+ 25.Qxe5 fxe5 26.Nf3 e4 27.Nd4 Kf7 28.Kg3 Kf6 29.Kf4 Bf7 30.g4 h6 31.g5+ hxg5+ 32.hxg5+ Kg6 33.Nf5 Be8 34.Ne7+ Kf7 35.Nxd5 Ke6 36.Nc7+ Ke7 37.Nxe8 Kxe8 38.Kxe4 Kf7 39.Kf5 g6+ 40.Ke5 1-0

R. Gardner - R. Yearwood
Alberta Closed, Round 5, 2002

1.e4 c5 2.Nf3 d6 3.d4 cxd4 4.Nxd4 Nf6 5.Nc3 g6 6.Be3 Bg7 7.f3 Nc6 8.Qd2 h5 9.0-0-0 Bd7 10.h4 Rc8 11.Nxc6 bxc6 12.f4 Qa5 13.Bd4 0-0 14.Kb1 Rfe8 15.Bd3 e5 16.fxe5 dxe5 17.Be3 Rb8 18.Nd5



Qa3 19.Nxf6+ Bxf6 20.b3 Be6 21.Qc3 Be7 22.Qxe5 c5 23.Bc1 1-0

(Continued on page 5)

(Continued from page 4)

D. Haessel - K. Boehmer
Alberta Closed, Round 5, 2002

1.c4 c5 2.g3 Nf6 3.Bg2 d5 4.cxd5 Nxd5
5.Nc3 Nc7 6.Nf3 Nc6 7.0-0 e5 8.Ne1
Bd6 9.Ne4 Be6 10.b3 0-0 11.Ba3 Na6
12.Nd3 Bd5 13.Nf6+ Qxf6 14.Bxd5 Rac8
15.Bb2 Qe7 16.f4 Nab4 17.Nxb4 Nxb4
18.Bg2 e4 19.f5 Be5 20.f6 Bxf6
21.Bxf6 gxf6 22.Rf4 c4 23.Bxe4 Nd5
24.Rg4+ Kh8 25.Qf1 f5 26.Qxf5 Nf6
27.Rf1 Nxe4 28.Rxe4 Qc5+ 29.Qxc5 Rxc5
1-0

G. Huber - M. Hughey
Alberta Closed, Round 5, 2002

1.e4 e5 2.Nc3 Bc5 3.g3 Nf6 4.Bg2 c6 5.d3
d5 6.exd5 Nxd5 7.Nf3 0-0 8.0-0
Qc7 9.Re1 Nxc3 10.bxc3 Nd7 11.d4 Bd6
12.Qd3 h6 13.Bb2 f5 14.Nh4 e4
15.Qc4+ Kh7 16.Bh3 Nb6 17.Qe2 Qf7
18.Ng2 Be6 19.f4 Bxa2 20.Bxf5+ Qxf5
21.Rxa2 Rfe8 22.Ne3 Qh3 23.Qg2 Qe6
24.Raa1 a6 25.Ba3 Nd5 26.Bxd6 Qxd6
27.Qd2 b5 28.Ra2 a5 29.c4 Nxe3 30.Rxe3
a4 31.c3
½-½

B. Eshleman - M. Hughey
Alberta Closed, Round 6, 2002

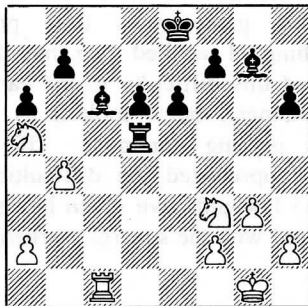
1.e4 e5 2.Nf3 Nc6 3.Bc4 Be7 4.d4 exd4
5.c3 Nf6 6.e5 Ne4 7.0-0 d5 8.Bb3
Bg4 9.cxd4 Bxf3 10.gxf3 Ng5 11.f4 Ne6
12.Be3 Bb4 13.f5 Nf8 14.Qf3 Ne7
15.f6 gxf6 16.exf6 Rg8+ 17.Kh1 Neg6
18.Bxd5 Qd6 19.Bxb7 Rb8 20.Qe4+ Kd8
21.Bc6 Ne6 22.d5 Nc5 23.Bxc5 Bxc5
24.Re1 Ne5 25.Qxe5 Qxe5 26.Rxe5 Bd4
27.Re2 Rxb2 28.Nd2 Rxd2 29.Rb1
1-0

R. Yearwood - G. Huber
Alberta Closed, Round 6, 2002

1.d4 Nf6 2.Nf3 c5 3.c3 b6 4.Bf4 Bb7
5.Nbd2 e6 6.e3 Be7 7.h3 0-0 8.Bd3
Nc6 9.Qc2 Rc8 10.dxc5 bxc5 11.Bg5 h6
12.Bf4 d5 13.g4 Nd7 14.Bb5 d4
15.Rg1 dxc3 16.bxc3 g5 17.Bh2 a6 18.Be2
Kg7 19.Nc4 f6 20.Rb1 Ba8 21.Nd6
Rb8 22.Rd1 Qa5 23.Nc4 Qd8 24.Bxb8
Nxb8 25.h4 Qe8 26.Nd6 Bxd6 27.Rxd6
Bd5 28.h5 Rh8 29.e4 Qe7 30.Rxd7
1-0

J. Reeve - D. Haessel
Alberta Closed, Round 6, 2002

1.e4 c5 2.Nf3 d6 3.Bb5+ Nd7 4.d4 Ngf6
5.Nc3 cxd4 6.Qxd4 a6 7.Bxd7+ Bxd7
8.Bg5 h6 9.Bxf6 gxf6 10.Nd5 Rg8 11.Nh4
Rc8 12.0-0 Bb5 13.Rfc1 Rc4 14.Qd3
e6 15.b3 Rc5 16.c4 Bd7 17.b4 Rc8 18.Nc3
f5 19.Nf3 Qc7 20.exf5 Qxc4
21.Qe3 Qg4 22.g3 Qxf5 23.Ne4 Rxc1+
24.Rxc1 Bc6 25.Ned2 Qd5 26.Qd4 Rg5
27.Qxd5 Rxd5 28.Nb3 Bg7 29.Na5



Rxa5 30.bxa5 Bxf3 31.Kf1 Kd7 32.Ke1
Bd4 33.Kd2 e5 34.Ke1 f5 35.Rc2 Bc5
36.Rb2 Kc6 37.Rb3 e4 38.Kf1 d5 39.Ke1
d4 40.Kd2 d3
0-1

K. Boehmer - R. Gardner
Alberta Closed, Round 6, 2002

1.c4 f5 2.d4 Nf6 3.Nc3 g6 4.g3 Bg7 5.Bg2
d6 6.Nf3 0-0 7.0-0 Nc6 8.d5 Ne5
9.Nxe5 dxe5 10.e4 f4 11.c5 g5 12.Qb3
Kh8 13.Bd2 Nh5 14.Ne2 b6 15.Rac1 g4
16.f3 Ba6 17.fgx4 Bxe2 18.gxh5 Bxf1
19.Rxf1 fvg3 20.Rxf8+ Qxf8 21.hvg3
Bh6 22.Bb4 Qf7 23.c6 a5 24.Be1 Qxh5
25.Qf3 Qxf3 26.Bxf3 Be3+ 27.Kg2 Kg7
28.Bc3 Kf6 29.a4 Bd4 30.Be2 Bxc3
31.bxc3 Rd8 32.Bg4 Kg5 33.Kf3 Rf8+
34.Bf5 h5 35.Ke3 h4 36.gxh4+ Kxh4
37.Kd3 Kg5 38.Be6 Kf4 39.Bd7 Rb8
40.c4 Rg8 41.c5 bxc5
0-1

D. Haessel - B. Eshleman
Alberta Closed, Round 7, 2002

1.c4 Nf6 2.g3 g6 3.Bg2 Bg7 4.Nc3 c6 5.e4
e5 6.Nge2 d6 7.0-0 0-0 8.f4 Be6
9.b3 Qb6+ 10.Kh1 Ng4 11.f5 Nf2+
12.Rxf2 Qxf2 13.fxe6 fxe6 14.Ba3 c5
15.Nb5 Qf7 16.Nxd6 Qc7 17.Nb5 Qc6
18.Qg1 Nd7 19.d3 a6 20.Nbc3 b5 21.Bc1
Nf6 22.Be3 Rac8 23.cxb5 axb5 24.h3 c4
25.dxc4 bxc4 26.b4 Rfd8 27.b5 Qb7
28.a4 Ra8 29.a5 Bf8 30.a6 Qc8 31.Na4
Nd7 32.Nec3 Bb4 33.Bf1 Kg7 34.Be2
1-0

R. Gardner - J. Reeve
Alberta Closed, Round 7, 2002

1.e4 c5 2.c3 Nf6 3.e5 Nd5 4.d4 cxd4
5.Nf3 e6 6.cxd4 b6 7.Bd3 Bb7 8.0-0
d6 9.Ng5 dxe5 10.dxe5 Nc6 11.f4 Ndb4
12.Be4 Bc5+ 13.Kh1 Qxd1 14.Rxd1 h6
15.Nf3 Rd8 16.Nc3 Rxd1+ 17.Nxd1 Nd8
18.Bxb7 Nxb7 19.a3 Nd5 20.b4 Be7
21.Nd4 Kd7 22.g3 Rc8 23.Kg2 Nd8
24.Kf3 Nc6 25.Ne2 h5 26.Bd2 g6 27.Ke4
Bd8 28.Rc1 b5 29.Be3 Bb6 30.Bxb6 Nxb6
31.Nd4 a6 32.Rxc6 Rxc6 33.Nxc6 Kxc6
34.Ne3 Nc8 35.g4 hxg4 36.Nxg4 Kd7
37.Kd4 Nb6 38.Nh6 Ke7 39.Kc5 Nd7+
40.Kc6 g5 41.fvg5 Nxe5+ 42.Kb6 Nc4+
43.Kxa6 Nxa3 44.Ng4 Kf8 45.h4 Kg7
46.h5 e5 47.h6+ Kh7 48.Kb6 Nc2
49.Kxb5 Nd4+ 50.Ka6 Nf3 51.Nf6+ Kg6
52.Ne4 f5 53.gxf6 Kxh6 54.b5 Nd4 55.b6
Kg6 56.b7 Nc6 57.Kb6 Nb8 58.Kc7
Na6+ 59.Kc8
1-0

M. Hughey - R. Yearwood
Alberta Closed, Round 7, 2002

1.d4 Nf6 2.Nc3 c5 3.d5 g6 4.e4 d6 5.Nf3
Bg7 6.Be2 0-0 7.0-0 Na6 8.Bg5 Nc7 9.a4
a6 10.a5 Rb8 11.Nd2 Nd7 12.Nc4 b5
13.Nxd6 f6 14.Nxc8 fvg5 15.Na7 Ne5
16.Nc6 Nxc6 17.dxc6 Bd4 18.Qc1 e6
19.Bf3 Qf6 20.Nd1 h5 21.c3 Be5 22.Qe3
b4 23.Qxc5 bxc3 24.bxc3 Qf4 25.g3 Bd6
26.Qd4 Qe5 27.Be2 Nb5 28.Qxe5 Bxe5
29.Bc4 Nc7 30.Re1 Rfd8 31.Rc1 Rd6
32.Ne3 Rxc6 33.Re2 Rc5 34.Ra2 Kg7
35.Kf1 Bf4 36.gxf4 gxf4 37.Bxa6 Nxa6
38.Nd1 Rbb5 39.Rca1 f3 40.Ra3 g5 41.c4
Rxc4 42.Rxf3 g4 43.Rd3 Rcc5 44.Rd6
Rxa5 45.Rxa6 Rxa1 46.Rxa1 Rc4 47.Ra5
Rxe4 48.Rxh5 Kg6 49.Rc5 Rd4 50.Ne3
Re4 51.Rc4 Rxc4 52.Nxc4 Kg5 53.Kg2
Kf4 54.Ne3 e5 55.Nf1 e4 56.Ne3
1-0

G. Huber - K. Boehmer
Alberta Closed, Round 7, 2002

1.e4 c5 2.Nc3 Nc6 3.Nge2 g6 4.d4 cxd4
5.Nxd4 Bg7 6.Nde2 Nf6 7.g3 d6 8.Bg2
Bd7 9.h3 Qc8 10.a4 Nb4 11.Be3 0-0
12.Rc1 Rd8 13.b3 d5 14.Nxd5 Nfxd5
15.exd5 Nxd5 16.Bxd5 Bc6 17.c4 e6
18.Bd4 exd5 19.c5 Qf5 20.Qc2 Qf3 21.0-0
Re8 22.Bxg7 d4
1-0

Alberta Women's Championship

By John Quiring, TD

Co-Champions: Anastasia Kazakevich
and Cornelia Dinca

Four players contested the 2002 Alberta Women's Championship, held in Edmonton on Feb. 16-17. Three of them--defending champion Anastasia Kazakevich, Carolyn McMaster and Megan Chi--had also played in last year's event, and they were joined by first timer Cornelia Dinca. The format of the tournament was advertised as "depending on the number of players who show up". With 4 players and time for 5 games, I proposed a two-tiered structure which the players accepted. A round-robin "qualifier" on day 1 would be followed by 2 game matches on day 2, with the top two players from the round robin playing for 1st and 2nd, and the next two players playing for 3rd and 4th.

Early on, Cornelia showed that, although she was a newcomer to Alberta, she was not a newcomer to chess, as she played a long, hard-fought draw with Anastasia in round 1. Long games became the norm in this tournament, as every round featured a game that pushed the limits of the time control. A dramatic moment occurred in the last game to finish in the round robin. Cornelia has already defeated Megan, to secure a spot in the championship match. Carolyn was playing Anastasia in a game that (of course) went to the wire, with the winner moving into the finals to play Cornelia. Now, Anastasia had won the last two Women's Championships by playing generally solid, unambitious games, and capitalizing on her opponents mistakes. She simply saw more at the board than her opponents. Imagine everyone's surprise when, with under 10 minutes on her clock compared to her opponent's 20, Anastasia suddenly dropped a piece for nothing. The resulting ending of bishop and 2 pawns against 3 pawns was winning for Carolyn. But Anastasia managed to trade off the dangerous pawn on the board and blockade the remaining rook pawn with her king. The extra bishop was the wrong colour to chase the king away, and Carolyn had to settle for a draw with her extra piece. As a result, Anastasia

advanced to the championship match on day 2. Equipment was a factor in this game. The beautiful wooden boards at the Edmonton Chess Club have a draw back: they do not have letters and numbers marked along the edges. Edmonton players are used to this, but Carolyn is from Calgary and she was used to looking at the board for help in writing the moves. She was clearly labouring to maintain her score sheet, at the end of her third long game, with time pressure approaching. I recalled then that she had mentioned this difficulty to me earlier in the tournament, but I took it as "small talk", a passing comment. If I had properly appreciated the difficulties this presented I would have given her game a vinyl board with the squares marked. Mea culpa.

Day 2 began with tie-break discussions. I had deliberately delayed this until the players were known, because geographic factors can play a role in deciding what tie-break possibilities are possible. Now finding one player from Edmonton and another from Calgary, the issue needed to be decided that day and I proposed two possibilities in the event of a tie:

- 1) a shared championship. This was possible because there were no special rewards for an absolute champion.
- 2) playoff with reduced time controls.

Cornelia suggested sharing the championship, and Anastasia agreed. This resulted in an anticlimactic match marked by a distinct lack of fighting chess, as both players seemed quite happy to draw the match. And they did draw it; in fact all three games between these two players over the two days were drawn. Congratulations to our co-champions, Anastasia and Cornelia.

C. Dinca—An. Kazakevich

Alberta Women's Championship, 2002

1.e4 d5 2.exd5 Qxd5 3.Nf3 Nf6 4.d4 Bg4 5.Be2 e6 6.0-0 Nbd7 7.Nc3 Qa5 8.a3 c6 9.h3 Bh5 10.Bf4 Be7 11.Ne5 Bxe2 12.Nxe2 0-0 13.b4 Qd8 14.c4 Rc8 15.Ng3 Nb6 16.Rc1 Nfd7 17.Qg4 Nf6 18.Qd1 h6 19.Qd3 Nbd7 20.Nxd7 Qxd7 21.Be5 Rfd8 22.Rcd1 a6 23.Ne4 Nxe4 24.Qxe4 Bd6 25.Rfe1 Qc7 26.Bxd6 Qxd6 27.Rd3 b5 28.c5 Qd5 29.Qxd5 Rxd5 30.Re5 Rcd8 31.Rxd5 Rxd5 32.f4 f6 33.Re3 Kf7 34.Rd3 h5 35.Kf2 Rf5 36.Ke3 h4 37.a4 g5 38.fxg5 Rxg5 39.Kf2 Rf5+ 40.Ke2 Rg5 41.axb5 axb5 42.Kf2 Rf5+ 43.Rf3 Rxf3+ 44.gxf3 Kg6 45.Ke3 f5 46.f4

½-½.

Round Robin Qualifier

1. Cornelia Dinca	X	1	1	1/2	Total 2.5/3
2. Carolyn McMaster	0	X	1	1/2	Total 1.5/3
3. Megan Chi	0	0	X	0	Total 0/3
4. Anastasia Kazakevich	1/2	1/2	1	X	Total 2.0/3

Championship Match

Cornelia Dinca	1/2	1/2	Total 1.0/2
Anastasia Kazakevich	1/2	1/2	Total 1.0/2

Consolation Match

Carolyn McMaster	0	1	Total 1.0/2
Megan Chi	1	0	Total 1.0/2

(Continued from page 7)

the centre, d4 might collapse before black gets mated, in which case white might be in trouble. **15...Qg6 16.b4 f5 17.b5 Ne7 18.c5 f4 19.b6 axb6 20.cxb6 fxe3** [I expected 20...c6 but after 21.a4 with the idea of a5 and a6, white's attack looks very strong.] **21.bxc7 Kxc7 22.Nb4 Kb8 23.Na6+** A much better square for the knight than f3! **23...Ka7 24.Nb5+ Kxa6 25.Nc7+ Ka7 26.Qb5 Kb8** [26...Nc6 27.Rb1; 26...Rd6 27.Qa5+ Ra6 28.Nxa6; and 26...Rd5 27.Qa4+ Kb6 28.Qb4+ Ka7 29.Qa3+ Kb6 30.Nxd5+ all lead to mate.] **27.Na6+ Ka7 28.Nc7?** [Amazingly I was unable to find 28.Rc7 Qe4 29.d5 Rb8 30.Nxb8 Rxb8 31.Qa5#. Only one question mark because I had another chance to play Rc7 on move 30.] **28...Kb8 29.Na6+ Ka7 30.Nc7??** And Rob claimed a draw by three-fold repetition. ½ - ½

A complete waste of an otherwise decently played game by white. Although black didn't make any obviously terrible moves, his pieces ended up being very badly placed in terms of supporting his King.

R. Gardner - J. Reeve
Edmonton Closed, Match Game 1, 2002

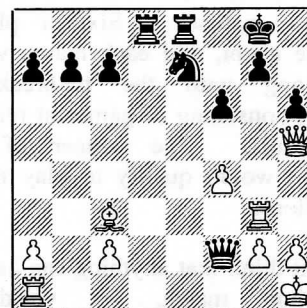
1.e4 c5 2.c3 Nf6 3.e5 Nd5 4.d4 cxd4 5.Nf3 e6 6.cxd4 b6 7.Bd3 Bb4+ 8.Bd2 Bb7 9.0-0 Nc6 10.Nc3 Nxc3 11.bxc3 Be7 12.Re1 d5 13.exd6 Qxd6 14.Ng5 Bxg5 15.Bxg5 0-0 16.Re3 Qd5 17.Qg4 f5 18.Qh3 g6 19.Bh6 Rf7 20.Rae1 Re8 21.Bb1 Bc8 22.R3e2 Rfe7 23.a3 Ba6 24.Re3 e5 25.Bg5 Re6 26.Bxf5 gxf5 27.Qxf5 Rf8 28.Qg4 Rg6 29.Qh4 exd4 30.Rh3 h6 31.f4 d3 32.Qh5 Qf5 33.g4 Rxg5 34.Qxg5+ Qxg5 35.fxg5 d2 36.Rd1 Rf1+ 0-1

Adam Tassone - John Quiring
Edmonton Closed, Match Game 1, 2002
Notes by Adam Tassone

1.e4 e5 2.Nf3 Nc6 3.d4 exd4 4.Nxd4 Qf6 5.Nxc6 (with this move I tried to transpose into one of the Scotch main lines which would have arose after 4...Bc5, black can transpose here with 5...Bc5 6.Qd2 dxc6). **5...Qxc6 6.Nc3?** (this move was still another attempt to transpose to a variation of the mainline with 6...Bc5 unfortunately it drops a pawn after Bb4 something I realized right after playing it). **6...Bb4 7.Bd3 Bxc3+ 8.bxc3 Qxc3+ 9.Bd2 Qf6** (At this point I tried to see if I had enough compensation for the pawn. It might be enough, 2 pieces developed along with a central pawn plus I have the

two bishops. Here I decided my best chances lie with a king side attack. Rob Gardner also pointed out that white has drawing chances, possibly even winning chances in an endgame since I have the two bishops) **10.O-O Ne7 11.f4 O-O 12.Rf3** (This was a critical position. I have developed my minor pieces and secured my king and now want to bring in my major pieces. I had three candidate moves Rf3, e5, and Kh1. e5: seems to block in my dark squared bishop and John didn't like it either though I am still not sure about it. Kh1: a move I would probably have to play sooner or later but I wanted an aggressive move. Rf3: obviously with ideas of Rg3 or Rh3. I thought black had to play d6, but for some reason I forgot pawns can move two squares. Anyway I think this move still has merit). **12...d5!** (Definitely a good move fighting for the center also threatening Bg4.) **13.Qe1** (this seemed to be the only move to solve **13...Bg4** while continuing with the king side assault. If **13.e5 Qb6+ 14.Be3 d4**, if **14.Re3 Nf5** forcing me to trade off my light squared bishop with little life for my other bishop). **13...dxe4 14.Bxe4 Bf5 15.Bc3!** (I liked this move since all my pieces seem to be hitting black's king, though I have to trade off my other bishop. John suggested **15.Bxb7 Qb6+ 16.Kh1 Qxb7 17.Qxe7** but after **Rfe8** black gets both rooks on central files and its white who's defending. At this point in the game Sasha came over and spent some time looking at the game. He smiled and winked at me, I assumed this was a good thing and that my attack looked good). **15...Qb6+ 16.Kh1 Bxe4 17.Qxe4 Rfe8 18.Qe5 f6** (black has little choice here in his defense if **18...Qf6 19.Qxc7**, if **18...Qg6 19.Rg3** At this point I thought white's attack is finally showing dividends). **19.Qh5 Rad8 20.Rh3 h6** (at any point black doesn't want to open the a1-h8 diagonal since it should spell disaster for his king). **21.Rg3 Qf2** (though this move loses for black, it was a good test of my nerves, a test I failed, since I only had 10 minutes left. In actuality black doesn't seem to have that many choices except one, if **21...Kf8 22.f5 Qc6 23.Qg4 g6 24.fxg6 Nd5 25.Qh3 Kg7 26.Bd2 +-** if **21...Kh7 22.Qf7 Nf5 23.Qg6+ -, 21...Kh8 22.Qf7 Nf5 23.Rxg7 Nxc7 24.Bxf6 Rg8 25.Qg6** and black must give up his queen for the bishop, this last note was provided by Rob Gardner. Black does have the move

21...Qe6! intending Qf7 and I couldn't find any move to continue the attack, obviously if **22.Qxh6 Nf5**. I guess this was black's saving move, possibly giving him a won game since he is still up a pawn).



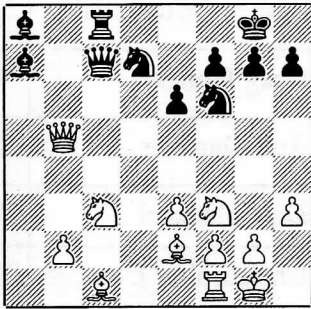
22.Rg4? Qxc2 (22.Qg4! and black must play Nf5 and I'm up a piece. Somehow I missed the simple move threatening mate in time trouble. If **22...g5** or **...g6** black gets mated with **Qe6+** and **Bxf6**). **23.Rg3?** (losing to Nf5 though the position is probably lost now since my attack has fizzled out and I'm down 2 pawns). **23...Nf5 24.Rg6??** (losing the bishop) **24...Qxc3** (I played a few more moves here reaching the second column hoping John would somehow forget about his knight on f5, but he didn't) 0-1

M. Stark - D. Ottosen
Edmonton Closed, Match Game 1, 2002
Notes by Ottosen

1.d4 d5 2.c4 dxc4 3.Nf3 Nf6 4.e3 e6 5.Bxc4 c5 6.0-0 Well, so this is how it felt for all those people who used to play me when I was booked up. I wonder what the next move is? **6...a6 7.Bb3 b5 8.a4 Bb7 9.Qe2 Qb6 10.axb5 axb5 11.Rxa8 Bxa8 12.dxc5 Bxc5 13.Nc3** I think its fair to say my opening has been a complete failure and I don't actually know where I went wrong. I have no useful way of defending the b5 pawn. I can get some compensation, if I so desire, by letting him take it and then playing **Bxf3** doubling his pawns. As I pondered this option, I suddenly remembered that I didn't get my rating by playing for doubling other people's pawns. I got it by sacrificing and checkmating. With this in mind, I decided...**13...0-0 14.Qxb5 Qc7 15.Bd1** I preferred **15.Na4** for him immediately pressuring my pieces or perhaps **15.Nd4** centralizing, but leaving the king a bit underdefended. However, the position is

(Continued on page 9)

more tricky than it might look. **15...Nbd7 16.h3** Worried about **16...Ng4** with threats of **17...Bxf3**. However, its not clear that this is a serious threat just yet. Certainly blacks pieces are moving to more threatening positions. I was maintaining an optimistic viewpoint at this stage. **16...Ba7** I was tempted by the easy lure of **16...Rb8**, but I knew my dark squared bishop needed to get on the b8-h2 diagonal since it was not really going to get anywhere attacking the e3 square. **17.Be2 Rc8!**

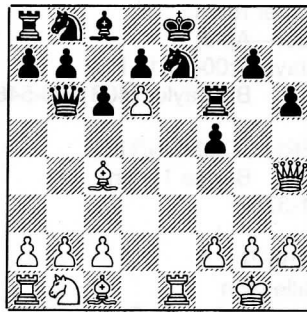


I think this was my favorite move of the game. **17...Bb8** is tempting but its hard to find an adequate answer to **18.Qc4**. **17...Rc8** develops my last piece to an open file, defends my queen, restricts his piece movement, and just generally makes me feel happy. **18.Na4?** The pressure was starting to get to Mark I think as this move serves no real purpose. I'm not sure what he should do. Perhaps whip the queen back to the kingside to help defend. **18...Bb8** Now I was confident of victory. The raking bishops! **19.g3 Ne4** There is no serious way of defending the g3 sacrifice. White is now in major difficulties. **20.Bd2!** An ingenious defense that actually almost saves him **20...Nxb3 21.Rc1 Bc6!?** Fritz likes **21...Qxc1+** **22.Bxc1 Rxc1+** **23.Kg2 Bc6** (I had only considered **23...Nxe2 24.Qxe2 Ne5 25.e4** and decided it didn't work) **24.Q-any Nxe2 25.Qxe2 Bxa4** when black has a rook and two pieces for the queen. Interesting thought. Mark was in major time pressure here (about 3 minutes for 10 moves) so I decided to complicate to the max. **22.fxg3?** I considered **22.Qa6** the only move. The game might continue **22.Qa6 Nxe2 23.Qxe2 Ne5** when black has a big edge in any event **22...Qxg3+ 23.Kf1 Bxb5 24.Rxc8+ Nf8 25.Bxb5 Qxf3+ 26.Ke1** Even after the only move **26.Kg1** white will lose quickly. Start with the move **26...Qd1+** and work from there. **26...Bg3# 0-1**

I felt like my rust was very evident in this match. Mark really took the play to me in game 1 and built up a good position in game 2. Good thing I'm a luckier player than him!

S. Grumic—G. Beebe
Edmonton Closed, Match Game 1, 2002
Notes by Adam Tassone

1.e4 e5 2.Nf3 Nf6 3.d4 exd4 4.e5 Nd5 5.Qxd4 c6? (This is definitely not the book move and seems to give black a rather awkward position where his light squared bishop looks trapped. Nb6 is book.) **6.Bc4 Qb6 7.Qe4** (A typical Sasha move. If white wants he can play **Bxd5** winning a pawn but white goes for the attack...maybe Sasha has to go home early?!) **7...Bc5 8.0-0 Ne7 9.Ng5 f6** (if **9...Rf8** black is still lost after **Qxh7** and little can be done to protect f7 after white takes g7. Oddly enough none of black's pieces can move to good squares.) **10.Nf7 f5 11.Qh4 Rf8?** (Better is **Ng6** then **Rf8** but once again blacks material is quickly coming off the board after **Qh7**) **12.Nd6+ Bxd6** (Better is **Kd8** leading to: **Qxe7+ Kxe7 Bg5+ Rf6 Nxc8+**. In reality black is dead in any variation but **Bxd6** seems to force mate) **13.exd6 Rf6 14.Re1 h6?** Little can be done here as most variations also lead to a quick mate.) **15.Rxe7+ Kf8**



16.Qxf6+ (sacrificing the queen for a forced mate after **gxf6 Bxh6#**. I guess Sasha got to go home early after all) **1-0**

GB: That was not one of my proudest moments but it is a good lesson on not showing up prepared against a master. While I did not always agree with Adams suggestions and comments, they got the point across. It's really the ending that makes this game kinda neat.

The Alberta Reserves

By John Quiring, TD

The Alberta Reserves are held simultaneously with the Alberta Closed. No doubt a few of the players looked wistfully at the far side of the room, at the Closed players with their luxurious playing conditions and fancy name tags, thinking to themselves "Some day I will be sitting over there". (A few players might also have thought, "I will NEVER be playing over there). This 5 round swiss was won by Grant Brown, with apparent ease, as his score of 4.5/5 was a full point ahead of the field. This result was worth \$110 in prize money, and I thank Grant for sending in annotated games. Second prize was a tie between Bill Bentley and Mark Stark, who took \$35 each. This was a particularly good result for Mark, whose pre-tournament ranking was in the middle of the crosstable. Another noteworthy result was that of the top Junior, Andrew Boik, who scored 3/5 despite being ranked second lowest in the tournament. He tied with Alex Kazakevich for the Under 1700 prize, \$60 each. Other "award" winners: the Cor Dewindt Prize For Most Draws goes to Nic Haynes who was undefeated with a win and four draws; and the Air Canada On Time award goes to Jim Daniluk, who arrived late for every one of his games and paid the price on the board.

Alberta Reserves—2002
Round 1: G. Brown - R. Pua

1.e4 c6 2.d4 d5 3.e5 Bf5 4.Ne2 e6 5.Ng3 Bg6 6. h4 h6 7.h5 Bh7 8. Bd3 Bd3 9.Qd3 c5 10.c3 Nc6 11.Be3 Qb6 12.O-O O-O-O 13.Nd2 Be7 [13.f6 is probably better. Black has to counter-attack quickly in this position. Also, as it turns out, the B/e7 blocks the N/g8 from getting into play.] 14.a3 c4 [This attempt to block the position doesn't work, but White will open the Q-side to good effect anyway.] 15.Qc2 Na5 16.Rfc1 Kb8 17.Rab1 Nb3 18.Nb3 Qb3 19.Qb3 cb3 20.c4 a5 21.cd5 Bg5 22.d6 Be3 23.fe3 g5 24.Rc3 f5 25.Rbc1 Rh7 26.Rc7 Ne7? [26.Rhd7 holds longer.] 27.de7 Re8 28.Rc8+ 1-0

{Editor}

More Games from the Alberta Reserves will be found in the September ACR.

CALGARY VENUES

Elephant & Castle Restaurant
8th Ave and 4th Street S.W.
Tuesdays 7:00—11:00 PM
Contact: Ron Hinds (403) 201-1653
Admission: \$2.00 per night

Bridgeland Community Center
Next to Bridgeland C Train Station
Sundays 12:00—6:00 PM
Contact: Ron Hinds (403) 201-1653
Admission: FREE

Timothy's
10th Street and Kensington Road.
Fridays 6:00—11:45 PM
Contact: (403) 270-9614
Admission: Buy a Coffee

Devonian Gardens in TD Square
Most afternoons (casual)
2:30—4:40 PM
Admission: Free

The Planet
2212—4th Street S.W.
Most evenings (casual)
Contact: (403) 541-0960
Admission: None

Bad Ass Coffee Company
10th Street & 17th Ave Sw
Most Evenings (casual)
Admission: None

EDMONTON VENUES

Prince of Wales Armory
#114A 10440—108 Avenue
Mondays 7:00—11:45 PM (Casual)
Contact: (780) 424-0283
Admission: \$2.00 per night

Thursdays 7:00—11:45 PM
(Rated Tournaments)
Contact: (780) 424-0283
Admission: \$2.00 per night + \$3.00 per
Tournament.

Delwood Chess Club
Delwood Hall
7515—Delwood Road
Thursdays 2:30—4:00 PM
(during school year)
Contact: Bruce Thomas
(780) 473-1557
Primarily for elementary students and be-
ginner adults

Stanley Milner Library
100 Street & 102 Avenue
Most afternoons (casual)
Admission: None

OTHER VENUES IN THE PROVINCE

COLEMAN
Royal Canadian Legion

GRANDE PRAIRIE
Royal Canadian Legion
9912—101 Avenue
Tuesdays 7:00—11:00 PM
(September—April)
Contact: Phil Lefkowitz
(780) 538-1903

HINTON
Queens Bakery and Café
124 Market Street
Contact: Peter Bundscherer
(780) 865-5050

LETHBRIDGE
University of Lethbridge
Room A844
Tuesdays 7:00—11:00 PM
(September—April)
Contact: Brian Titley
(403) 380-6751

LLOYDMINSTER
Cappuccino Voltaire Coop.
50th Street
Tuesdays 7:30 AM
Contact: Doug (780)825-0528
Or Eugene Gibney (780) 875-6352

MEDICINE HAT
Southview Community School
Coffee corner room
(September—April)
Wednesdays: 7:00-10:15 PM
Contact: Bill Taylor (403)526-5484

NORTHERN COMMUNITIES
Contact: Bernie Tynan
(780) 771-3757

PEACE RIVER
Peace Valley Inn
Rose Room 9609—101 St.
Contact: Alex Phimester
(780)624-8866

Top Active CFC Rated Albertans
(Played at least 1 Tourney since Aug 1, 2001)

Rank	Name	Rating
1	Jeff Reeve	2360
2	Nenad Ristic	2318
3	Knut Neven	2305
4	Arthur Odichowski	2294
5	Greg Huber	2290
6	Rob Gardner	2273
7	Dale Haessel	2267
8	Christopher Demers	2250
9	Sasha Grumic	2200
10	Nandor Tot	2186
11	Roy Yearwood	2102
12	Kris Boehmer	2101
13	Dr. Ronald Hinds	2087
14	Alan Clark	2067
15	David Ottosen	2062
16	Grant Brown	2057
17	Micah Hughey	2056
18	Zoltan Baunok	2050
19	Kirk Duval	2031
20	Ford Wong	2020
21	Jim Daniluk	2010
22	Walter Watson	2008
23	Kim Nguyen	2006
24	Taco Van Ieperen	2002
25	Geoff Newton	1989